

water-resistant laminate.

BERRY  ALLOC

**A lifetime
of joy.**



The start of your new adventure.

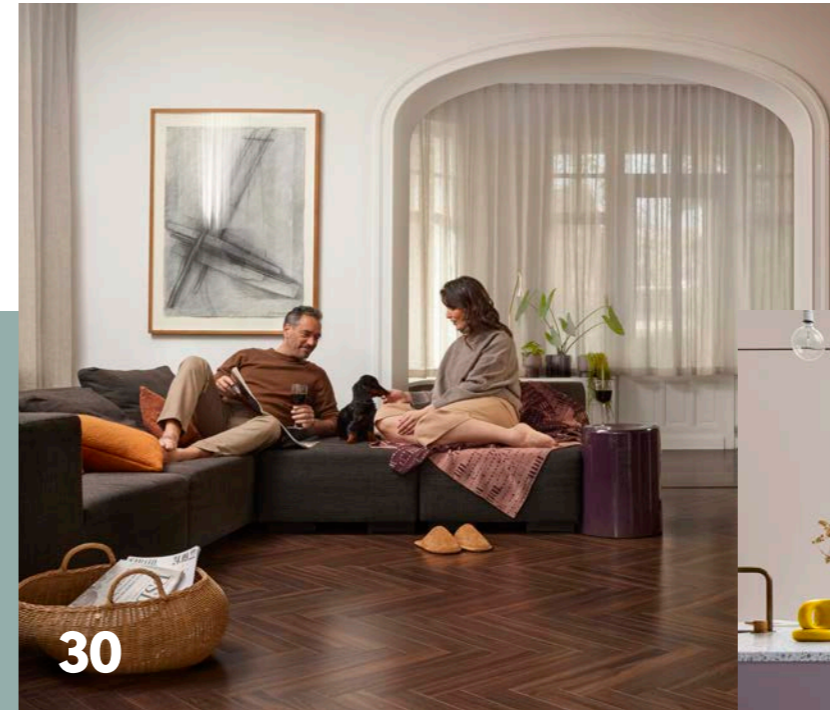
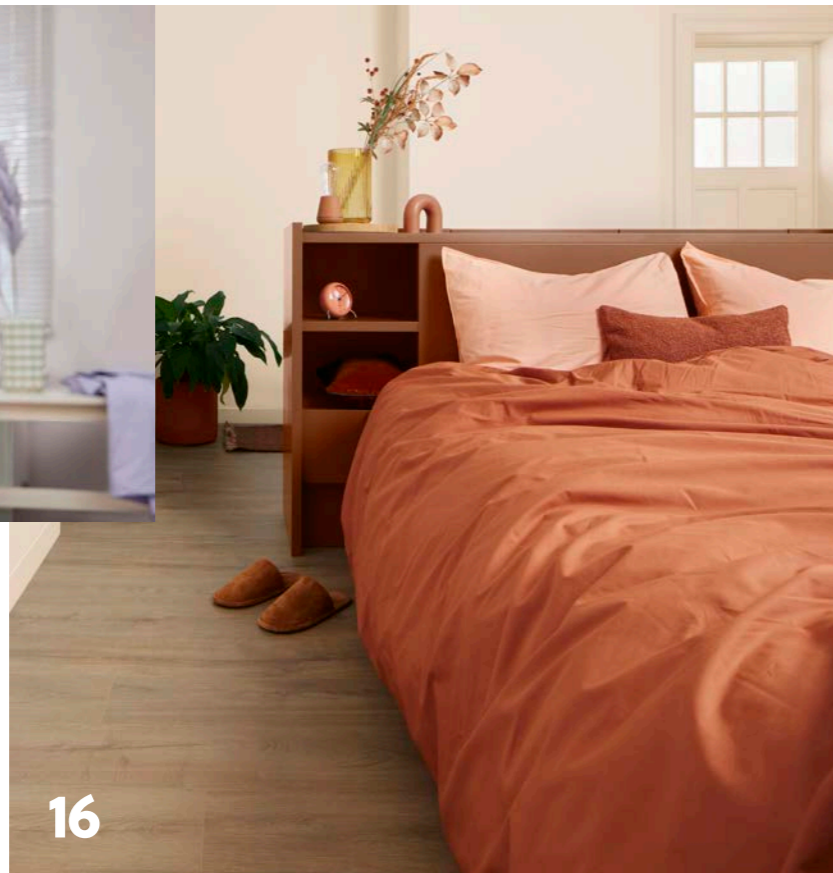
Let happiness inside.

This is it. The moment you've been waiting for: you get to pick out your new floor. Exciting! Let this brochure be your guide to **finding the right floor to match your dream interior.**

At BerryAlloc, our laminate floors are not only **made in Belgium**; they're made for all kinds of people and all kinds of lifestyles. Find **unlimited freedom in an extensive range of natural wood looks, colours, and possibilities**: light, dark, extra-large planks, regular... A stunning herringbone pattern or an ever-practical 100% water-resistant floor? It's all up to you!

Turn your home into a carefree zone with a **premium-quality laminate floor** that's highly scratch resistant, easy to clean, and guaranteed to last a lifetime. Open the door to cosiness and comfort and let these laminate floors support you with every step of the way. After all, our floors are made for moments of joy. Carefree moments of joy.

laminated.



Moments of joy.

Find out why these floors will bring you such **beautiful, quality, and carefree moments.**

↳ p. 6

Be inspired.

Explore our wide range of colours and find inspiration for your **interior design project** through helpful tips and tricks.

↳ p. 16

Get the right information.

Figure out what you need in a floor that's **made for your lifestyle**: plank sizes, a 100% water-resistant finish, a floor for a commercial space... you name it.

↳ p. 30

Discover the collections.

Get to know the two available collections in the BerryAlloc laminate range: **Ocean+ and Chateau+.**

↳ p. 40

Install, finish, and maintain.

Everything you **need to know** once you've chosen your dream floor.

↳ p. 54

Still got unanswered questions?

You'll find them right here in our **'Frequently Asked Questions'** section.

↳ p. 64

Beautiful moments.

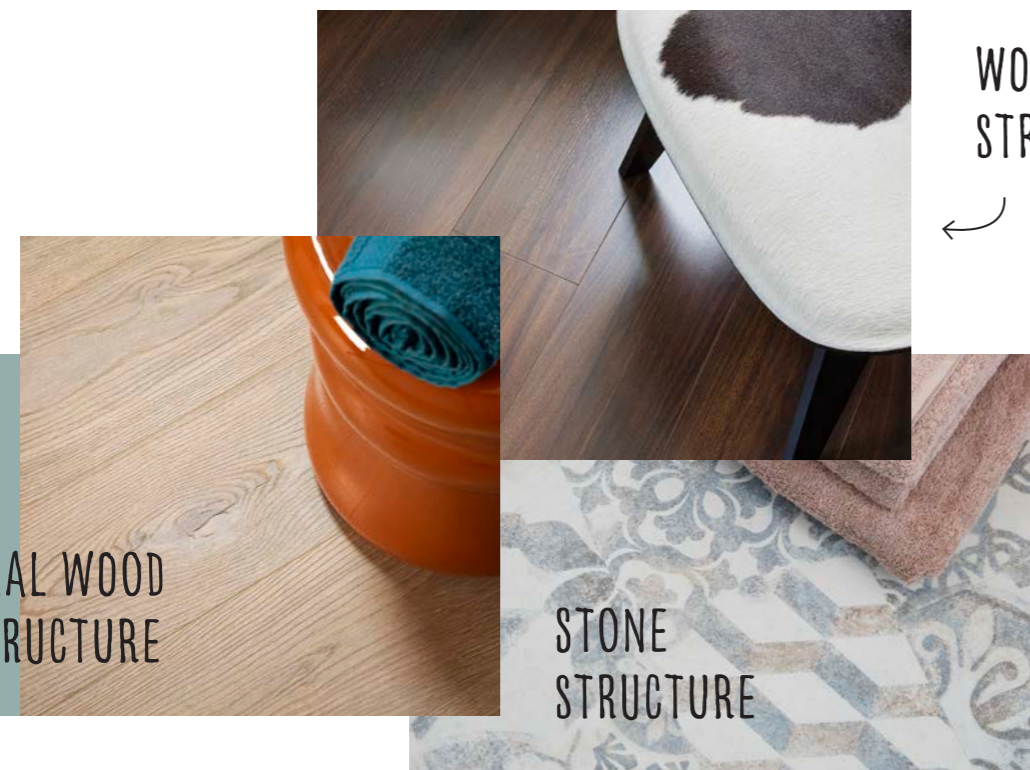
Enjoy many beautiful moments with a floor that'll bring you a **step closer to nature**.

Genuine wood looks

Lose yourself in the details of our wonderfully **matt and lifelike wood decors** – they're practically indistinguishable from real parquet. Each wood type and shade was **selected and designed by our experts with the utmost care**, choosing only the most authentic looks. Our team even took it a step further and constructed several designs from exclusive high-definition scans of actual pieces of wood. How cool is that?

Natural knots and cracks

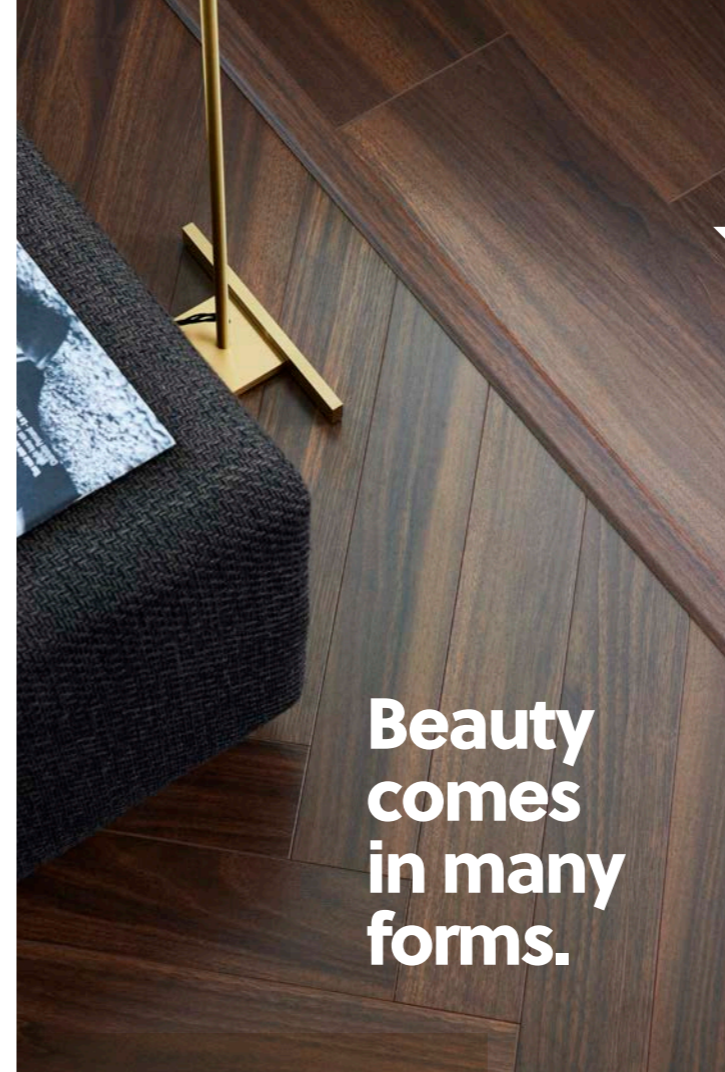
Our laminate experts have put a lot of research into matching the right structure with the distinct characteristics of each wood type. From **soft and subtle wood structures** for our pine designs to a unique, **real wood structure** for our exceptional oak designs; every single knot or crack is outlined for a highly realistic effect.



WOOD
STRUCTURE

REAL WOOD
STRUCTURE

STONE
STRUCTURE



Beauty
comes
in many
forms.

Mix & match:
Chateau+ Walnut Brown ●●
Ocean 8 V4 Walnut Brown ●●

Planks of all shapes and sizes

Choose a plank size that suits your wants and needs. Go for a wow-effect and create a **fabulous herringbone** pattern with our uniquely-sized small and narrow planks. Or open up a space using **extra-large planks** instead. And what about **standard-sized planks**? After all, classic never goes out of style. Plus, a select amount of the same colours are available in these different plank sizes, so that you can **mix and match floors** in different rooms for a unique, yet uniform look.

Colours inspired by nature

Colour is one of the most essential elements for a beautiful interior. With our floors, you'll be able to explore a **broad palette of colours** for all tastes, ranging from light to dark with all shades of beige, brown, and grey in between – all made with nature in mind. Looking to **create harmony in your home**? You'll not only find that perfect shade here, but also discover which colours match it best along the way.

Want to know **which colours work together**?
Learn more on p. 12.



harmony

lab.

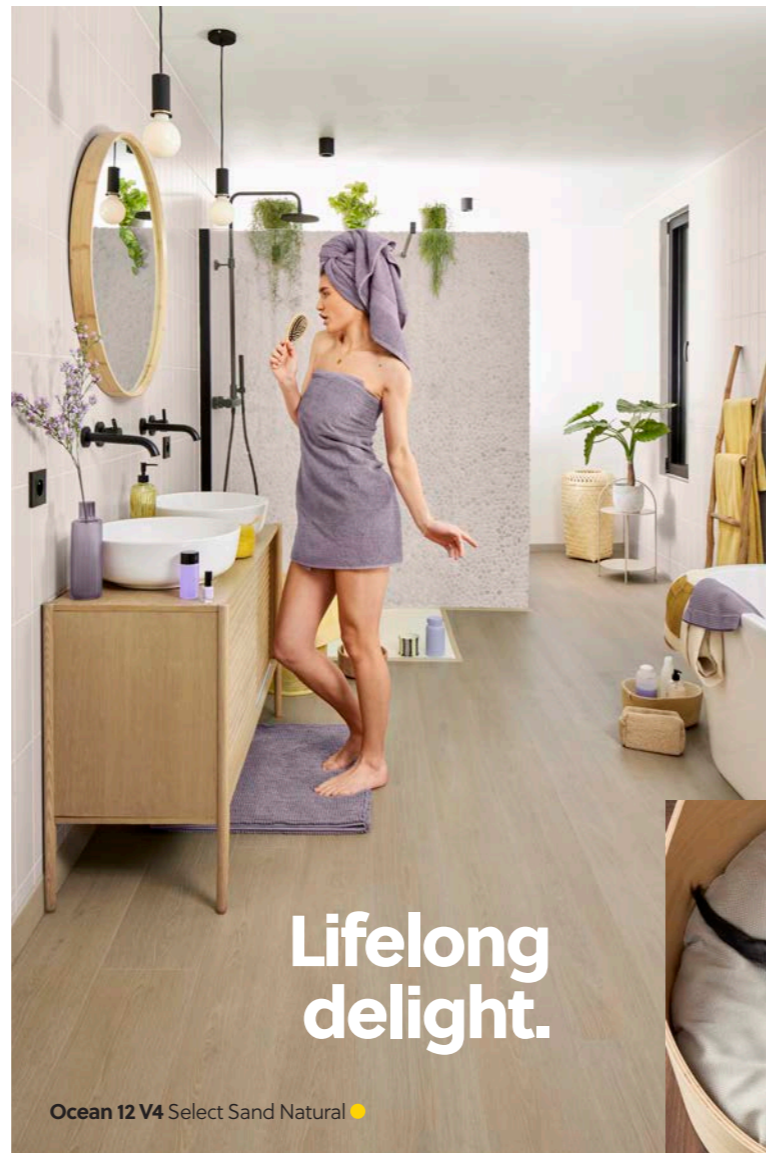
Carefree moments.

Real life doesn't always go according to plan. Luckily, **your laminate floor is one less thing to worry about.**



100% water resistant

Had a clumsy moment? No worries. The surface of our laminate planks is unable to absorb any liquid, making it fully splash resistant. Combined with our **hydro+ water-repellent coating** that further protects the edges of the planks, a compact locking system, and specialised hydro+ accessories used around the perimeter of the room, you've got yourself a **100% water-resistant floor that can withstand all kinds of spills.** That's right!



Scratch resistant

Not sure how your new floor will fare with pets in the house? We can already tell you now: it'll do just fine! Our laminate floors are highly **scratch resistant** thanks to our **premium-quality materials**, so those paws and claws can do no harm.



Fade and stain-free

What about other long-term effects? We'll let you in on a secret: **our floors can withstand spills from everyday products** such as food and make-up, so you're all set in that area too. Plus, our floors are **fully UV resistant**, so they won't fade over time. So open up those curtains and let the sun shine through!



Easy to install

Planning to tackle the installation yourself? With the right tools and the instructions available (you'll find them in the packaging or on our website and YouTube channel), you're fully prepared for a **quick and easy installation.** Simply slot the planks into place with the help of our snap-in-place locking system, and you'll be ready in no time.



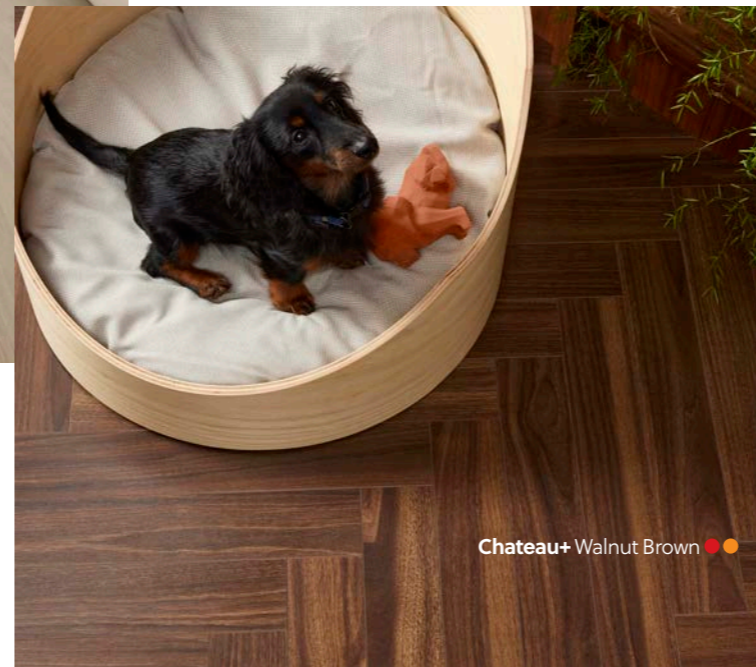
Easy to maintain

All those splashes and spills are easily wiped away to leave a sparklingly clean surface. For regular maintenance, use a soft brush, vacuum cleaner, or microfibre mop along with our biodegradable **laminate cleaner.**



Ideal for underfloor heating and cooling

Keep your toes toasty on our laminate floors! They're perfectly **compatible with underfloor heating and cooling**, an energy-efficient system to keep your house at an ideal temperature. You'll find a dedicated manual with more information on our website.



Quality moments.

Spend quality time on a floor that's produced with only the **highest standards** in mind.



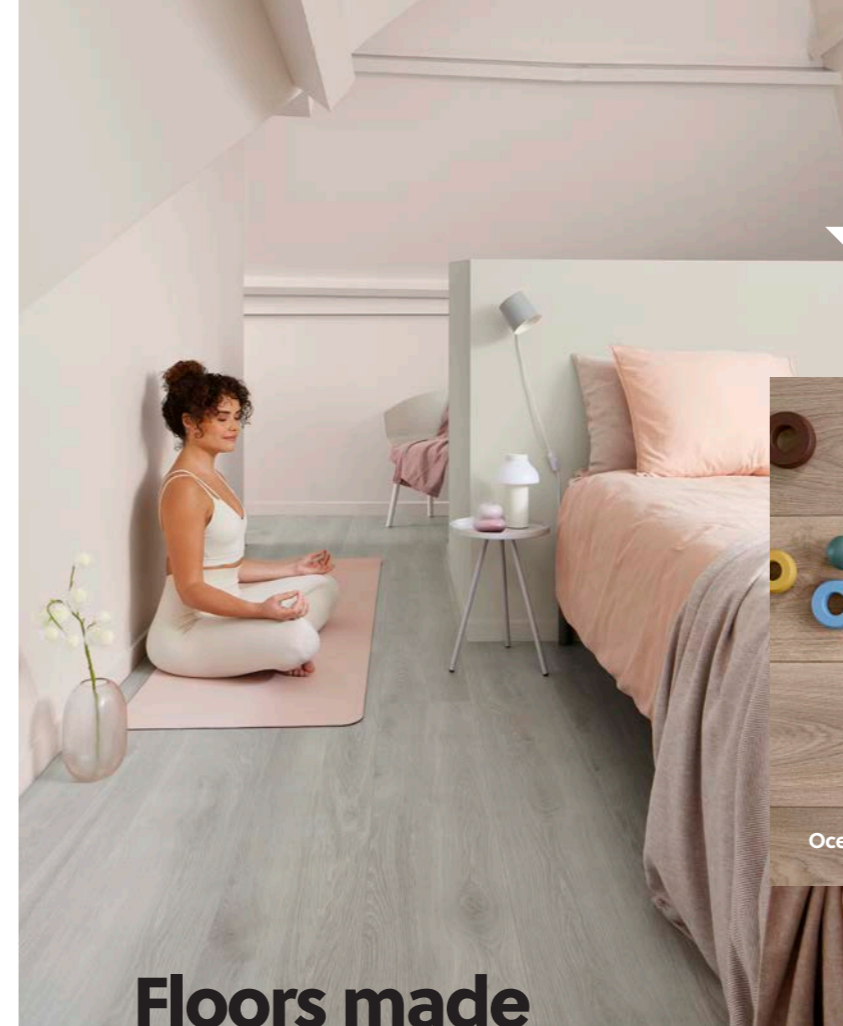
Made to last a lifetime

A home makeover requires a considerable investment, so make sure you get your money's worth by using **quality flooring**. And that's something you can find at BerryAlloc: our laminate is made from the best materials and rigorously tested for strength, water and splash resistance, impact damage, fading and discolouration, as well as stability and wear. So let our floors become the solid foundation to live your life to the fullest, as we wholeheartedly **guarantee** they're made to last a **lifetime** in your home.

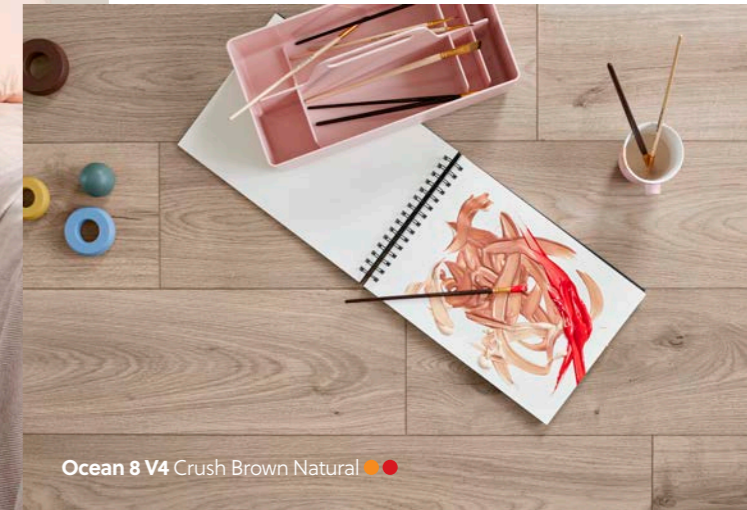


Premium quality floors

You're looking for a floor that'll suit your lifestyle. Whether it's private and peaceful, or bold and boisterous, our laminate floors are more than ready to take on the challenge. The use of **superior materials** and a **solid locking system** creates a floor that's **made to last**, with high levels of abrasion and scratch resistance. These premium quality floors are more than prepared to help withstand life's trials and tribulations.



Ocean 8 XL Bloom Silver Grey ●



Ocean 8 V4 Crush Brown Natural ●●

Floors made to relax.



Ocean 8 V4 Bloom Light Brown ●



Responsible floors

Our floors are not only made with your comfort in mind, but also with great respect to the environment. At BerryAlloc, we strive to use as little waste as possible. Our laminate floors are manufactured in Belgium to reduce the carbon footprint. Our laminate is **PEFC-certified PEFC/07-31-229** (Programme for the Endorsement of Forest Certification), supporting the promotion of Sustainable Forest Management. And with an extremely **low VOC** (Volatile Organic Compound) **emission**, our floors are safe and healthy to install in your home.

Made in Belgium

Our laminate floors hold the 'made in Belgium' label – something we're very proud of. The **entire creation process** from concept and design to manufacturing, testing, and packaging takes place in our plant in Menen, Belgium, under the careful eye of our dedicated flooring experts.

made in  Belgium

Harmonise your floor with your interior!

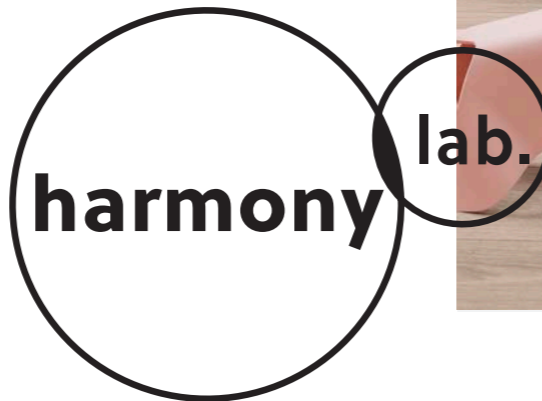
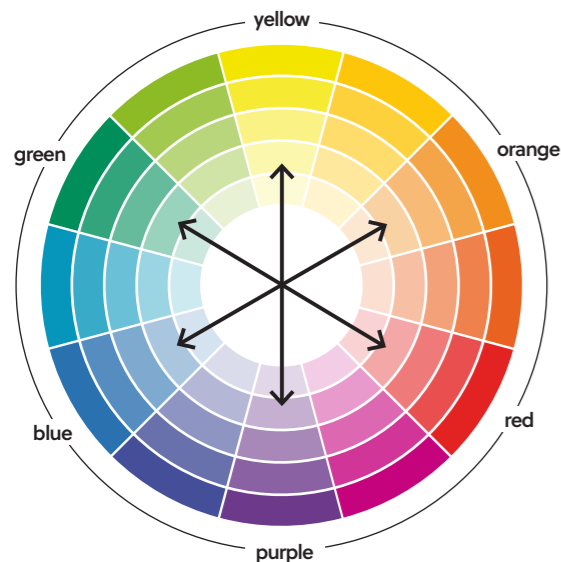
You've chosen your new floor — that's great! Now it's time to harmonise it with the rest of your interior.

While the colour of your floor seems fairly obvious at first sight, it has a whole layer of subtle undertones. This underlying shade is called **the colour character** of your floor. **Harmony Lab** will help you to match this with the colour scheme of your interior.

How it works

The colour character of our floors are categorised in 6 colour groups:

- yellow
- orange
- red
- purple
- blue
- green



Once you know the colour character, the **chromatic colour wheel** will guide you in your decisions.

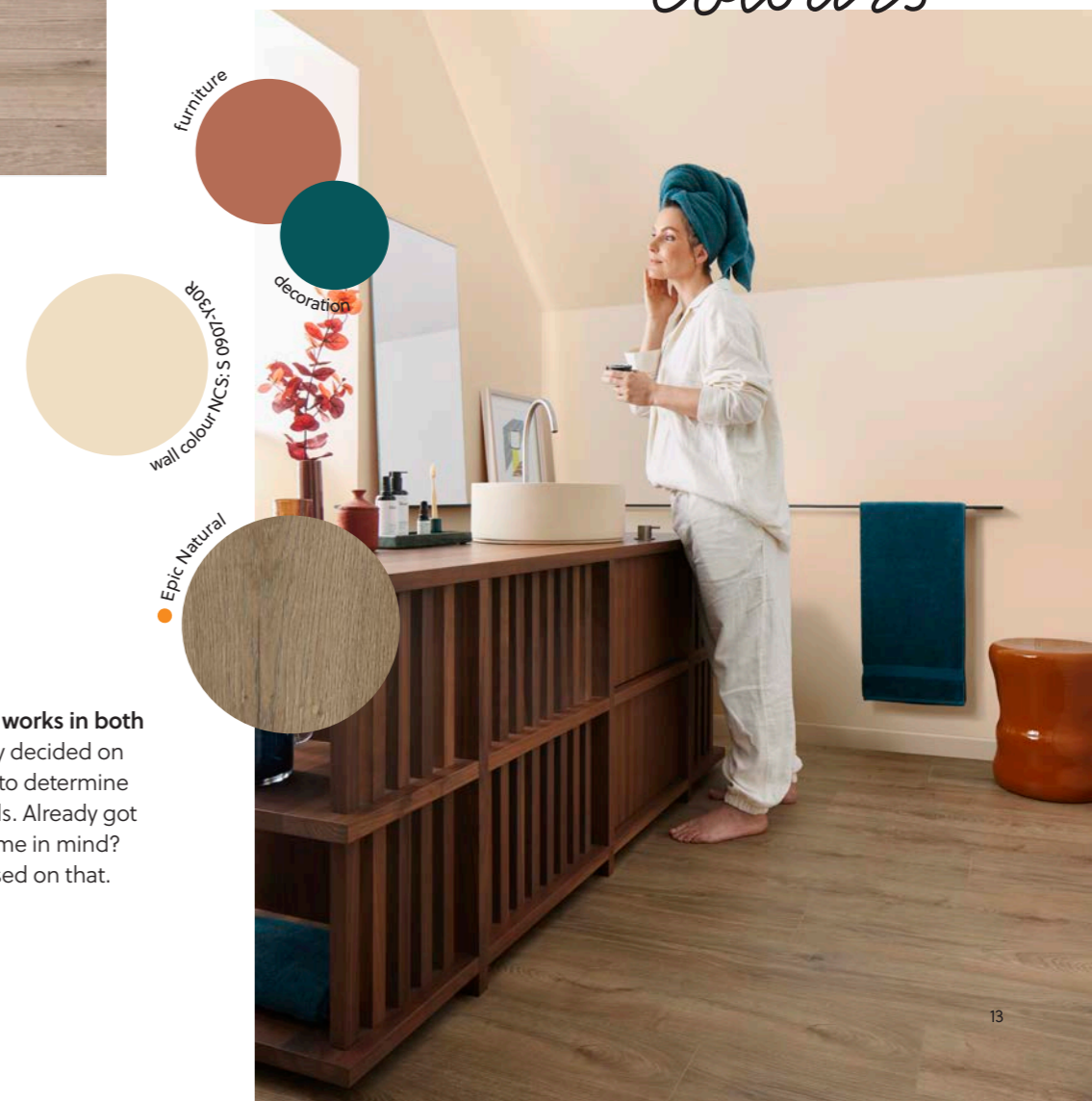
Using **harmonious colours** means using colours on the colour wheel that are either the same colour or the neighbouring colour of your floor's colour character. For example: if your floor has a blue character, this means using variations of blue, green, and purple.

Using **contrasting colours** means using colours that are directly opposite to your floor's colour character on the chromatic colour wheel. For example: if your floor has a yellow character, offset it with purple elements in your interior.

Harmonious colours



Contrasting colours



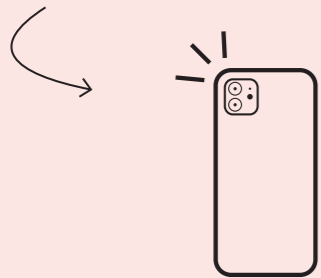
TIP

The colour character works in both ways: if you've already decided on a floor, you can use it to determine the colour of your walls. Already got a specific colour scheme in mind? Choose your floor based on that.

Are you having difficulty imagining your new laminate floor in your own home? **Floorfit** has got you covered. This **digital tool** simulates your top picks in a room of your choice. Take a moment to try out your favourite choices and figure out what suits your style best!

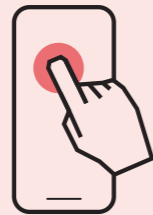
Turn imagination into reality.

Find out how it works:



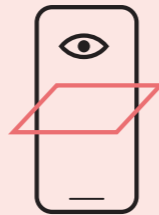
Snap

Take a photo of your room and **upload** it to **Floorfit**. Or choose from a range of standard rooms in the tool.



Select

Choose the **colour** you want to visualise through the built-in filters. Don't forget to select a laying direction and pattern.



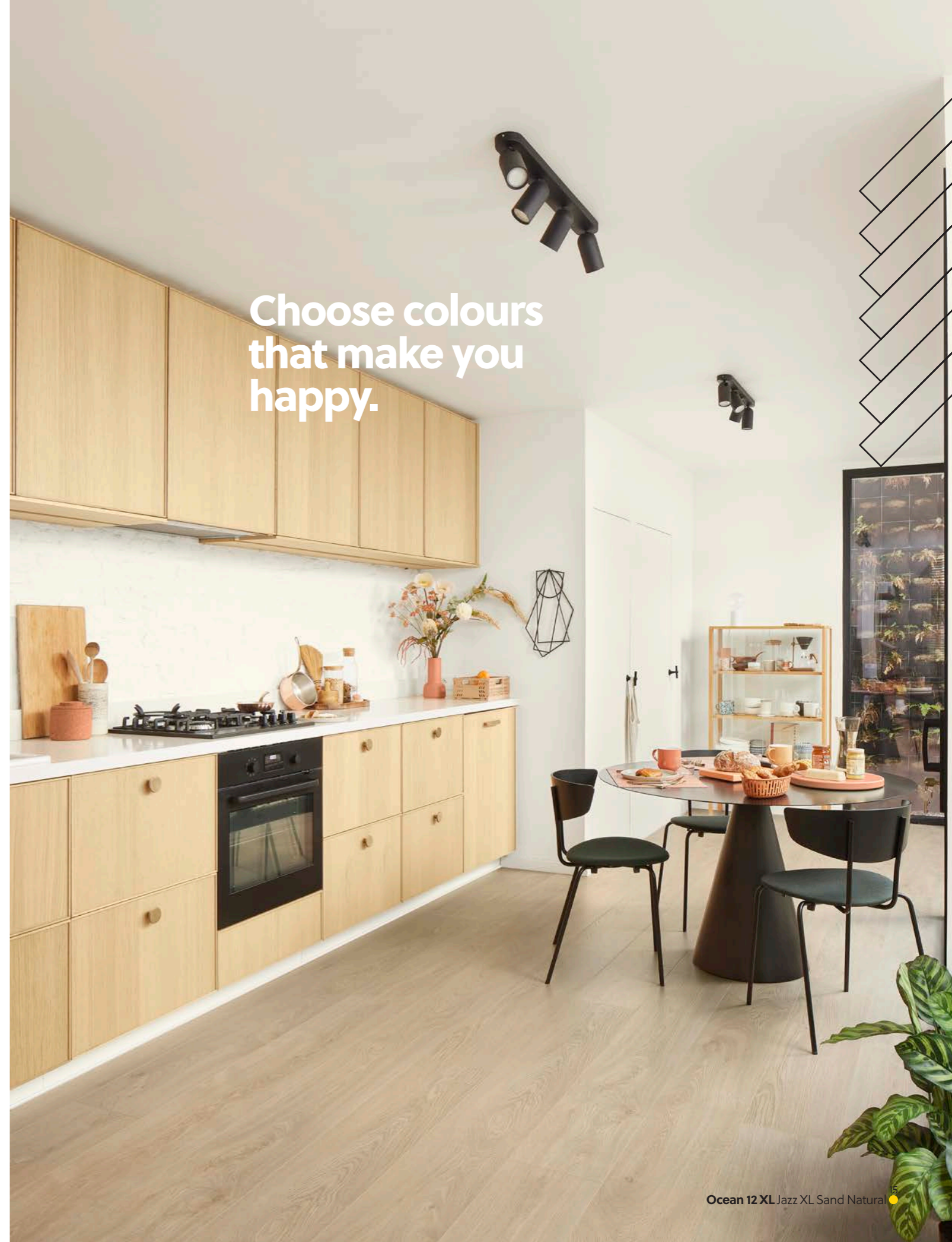
Floorfit

Have you found your dream floor? **Share** your final look with family and friends, or get in touch with your **local BerryAlloc dealer** for the next step.



What are you waiting for?
Floorfit it out!

Choose colours that make you happy.



Choose your favourite colour.

Choosing your new floor doesn't always have to be practical. It has to be pretty too! **Colour is one of the most important decisions** when buying a floor. But how to get to that perfect shade?

Find inspiration in a **broad range of natural colours** and discover which shades and styles blend together best to create the interior you've always dreamt of.



MIX & MATCH

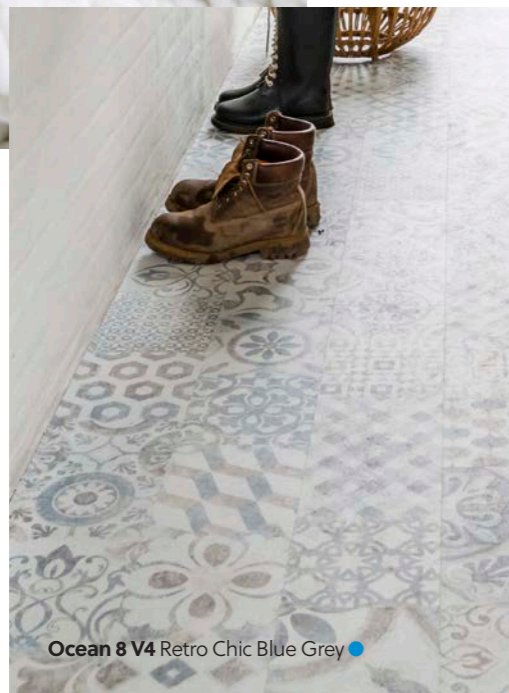
- Want the **same floor colour throughout your home**? We've got a select amount of decors available for **different plank sizes and attributes**, so you can **mix and match styles and finishes** from room to room!

*Get
inspired*



Whites.

A white floor is the **ultimate blank canvas** to build your interior on. It'll suit any aesthetic or interior style, and brings an **airy, minimalistic vibe** to the room. Want a bold print or daring colours for your walls? You'll never go overboard with your look if you've got white planks to counter-balance it.

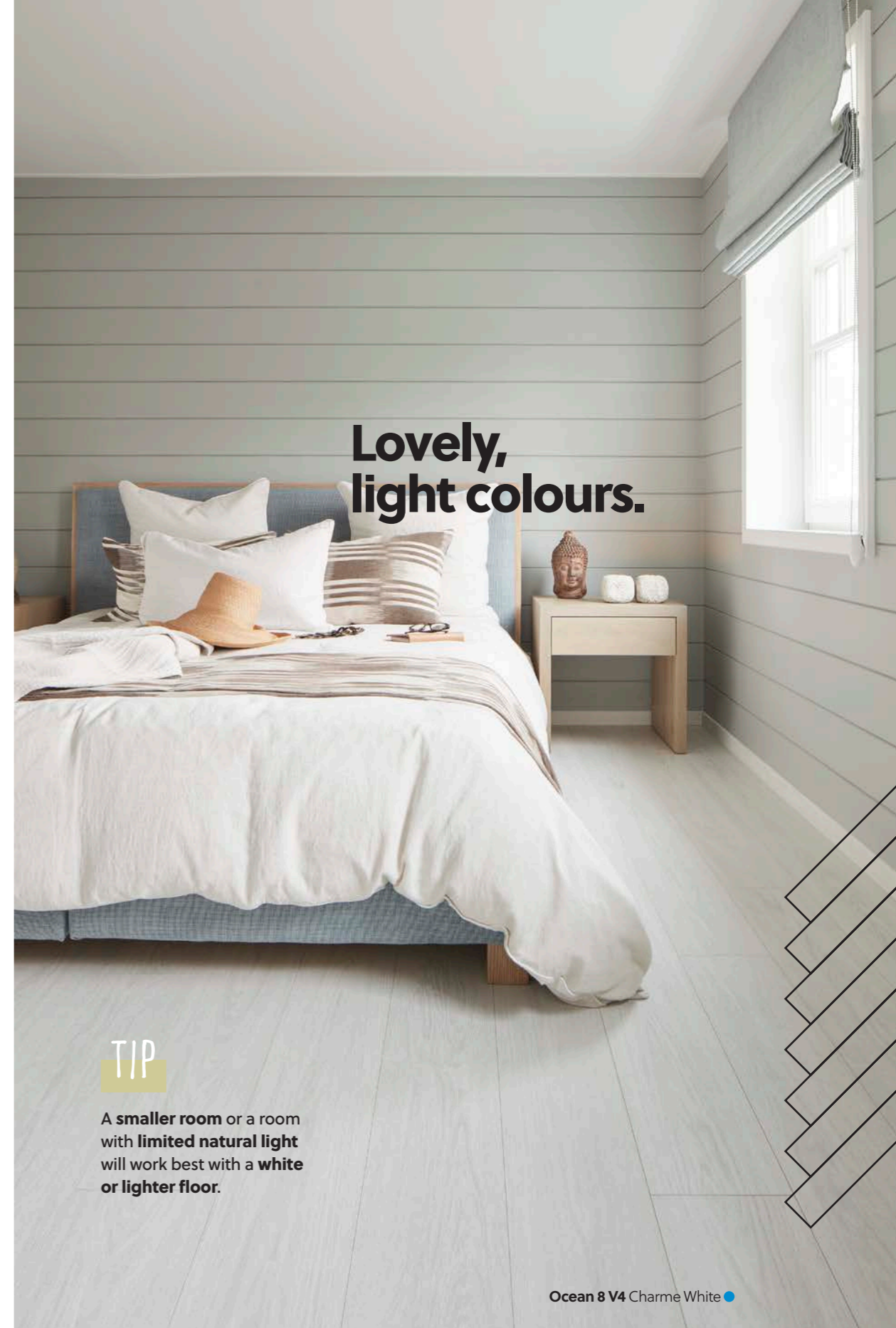


Ocean 8 V4 Retro Chic Blue Grey ●



Chateau+ Chestnut White ●

↳ Make your white floor **more playful** with our **Retro Chic Blue Grey** decor that mimics **Portuguese tiling**.



Lovely, light colours.

TIP

A **smaller room** or a room with **limited natural light** will work best with a **white or lighter floor**.

Ocean 8 V4 Charme White ●

You'll find more details on our **white floors** on p. 46.



Greys.

Looking for the **perfect neutral shade**? A grey floor is an **ideal base for a bolder interior**: it's light enough to brighten up a room and dark enough to hide dust and other imperfections. Its reserved, yet elegant character will divert the spotlight towards other decorative elements, making it the ultimate sidekick to **make the rest of your interior shine**.

Ocean 8 XL Bloom Silver Grey ●



Beautifully balanced.

Ocean 8 V4 Jazz Light Grey ●

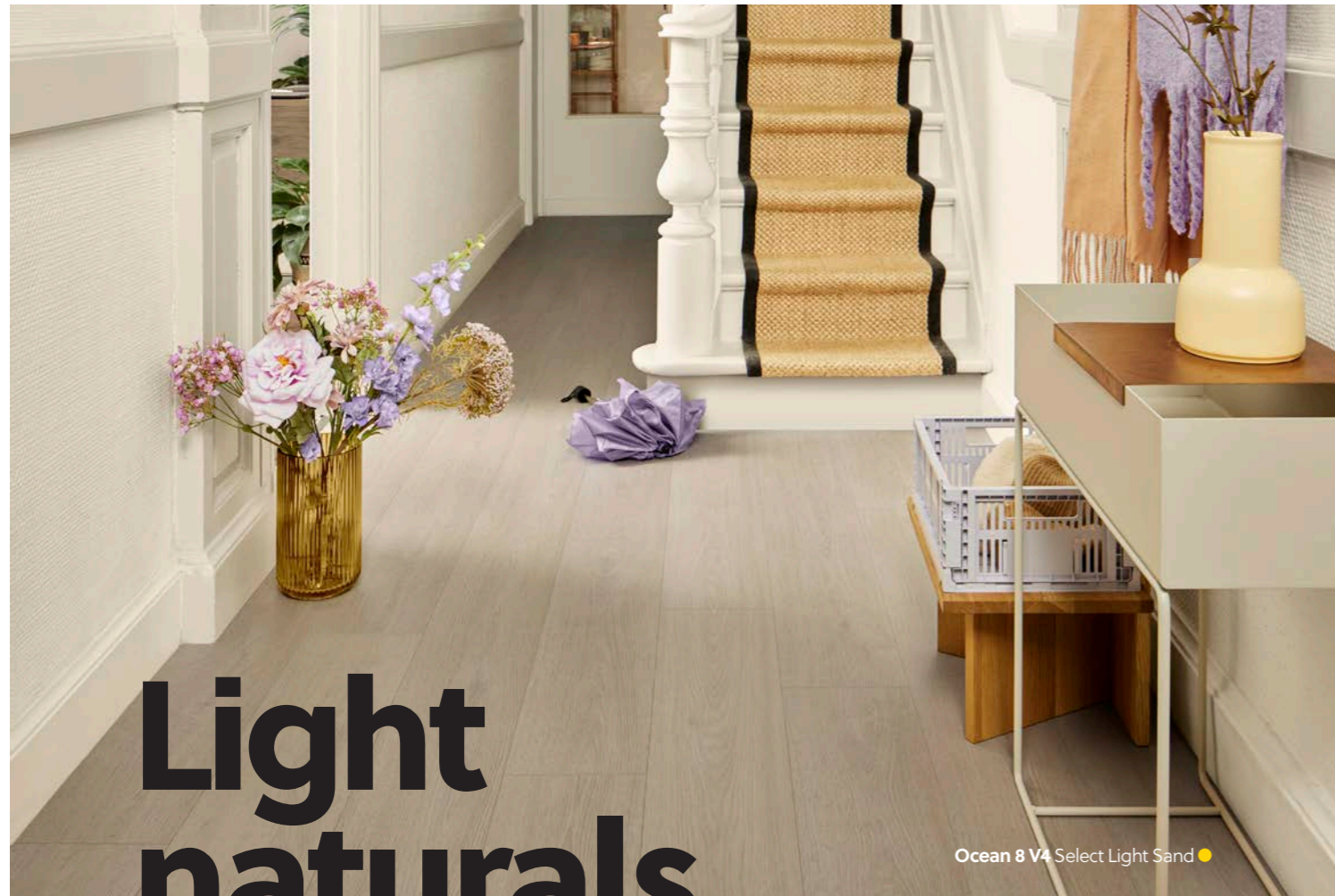
TIP

Furniture with a more **understated style** will stand out best in a grey interior.



Chateau+ Java Light Grey ●

A full overview of our **grey floors** is available on p. 47.



Light naturals.

Ocean 8 V4 Select Light Sand ●



Chateau+ Charme Light Natural ●



Ocean 12 V4 Gyant Light Sand ●

Classic and gorgeous.

Another alternative to a more neutral floor is a light natural shade. This **range of beige and sand hues** combines the best of both worlds if you want a lighter floor to brighten up your space, yet still retain that wonderfully natural wood look. Create a **peaceful and pure atmosphere** with these beloved, timeless options.



Ocean 8 V4 Charme Light Natural ●

TIP

Light natural floors also work well with a **minimalist aesthetic**. Choose a floor without bevels to enhance that **clean, uniform style**.

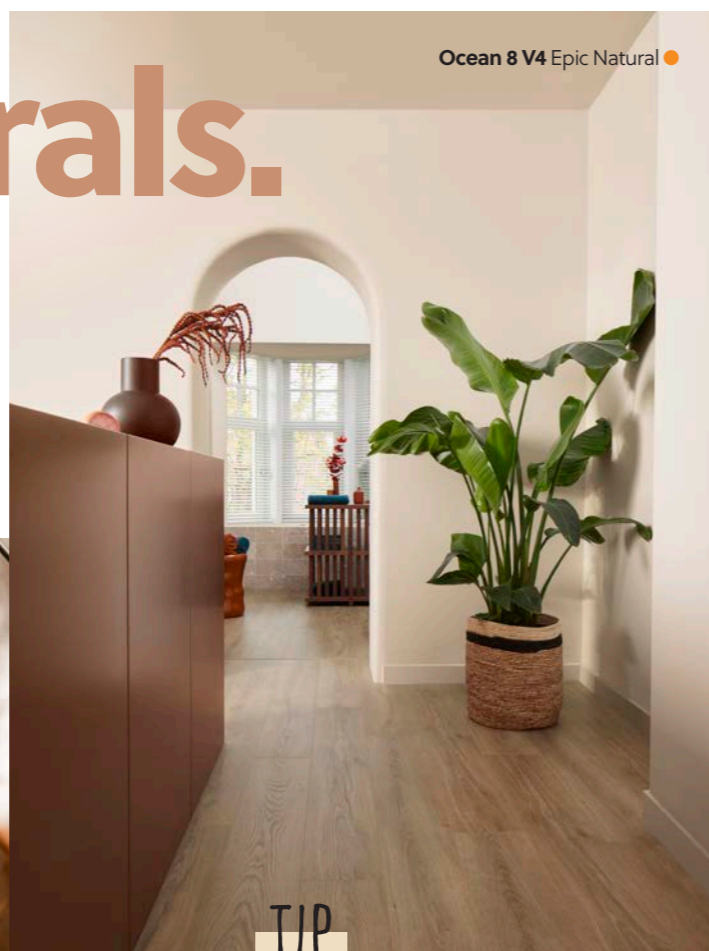
Want to see more **light natural options**? Check them out on p. 48.



A floor with natural shades remains a true **classic**. The honey and copper-infused tones are ideal for highlighting the wood grain, giving you a **look that's closest to nature**. These floors will bring a cheerful, sunny energy to your room while still creating the illusion of more space.

Naturals.

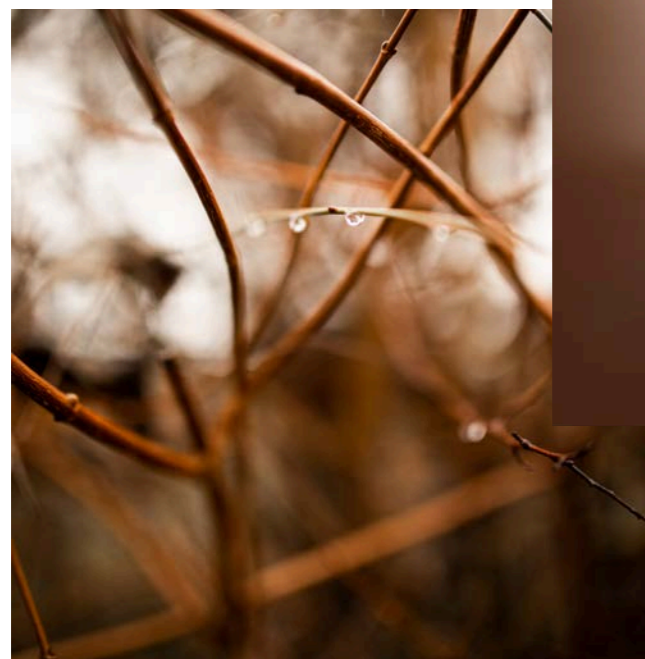
Ocean 8 V4 Java Natural ●



Ocean 8 V4 Epic Natural ●

TIP

Choose a natural floor with **extra knots and cracks** to create a **more rustic setting**.



Warm, cosy moments.

↳ In love with the colour of your new floor? Use our **matching skirtings and profiles** to complete the look: p. 71.

Ocean 12 XL Gyant XL Warm Natural ●

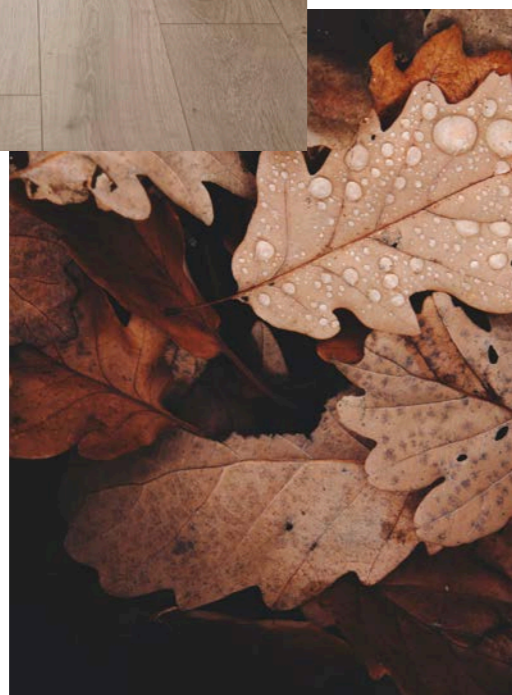
Discover the full range of our **natural floors** on p. 50.



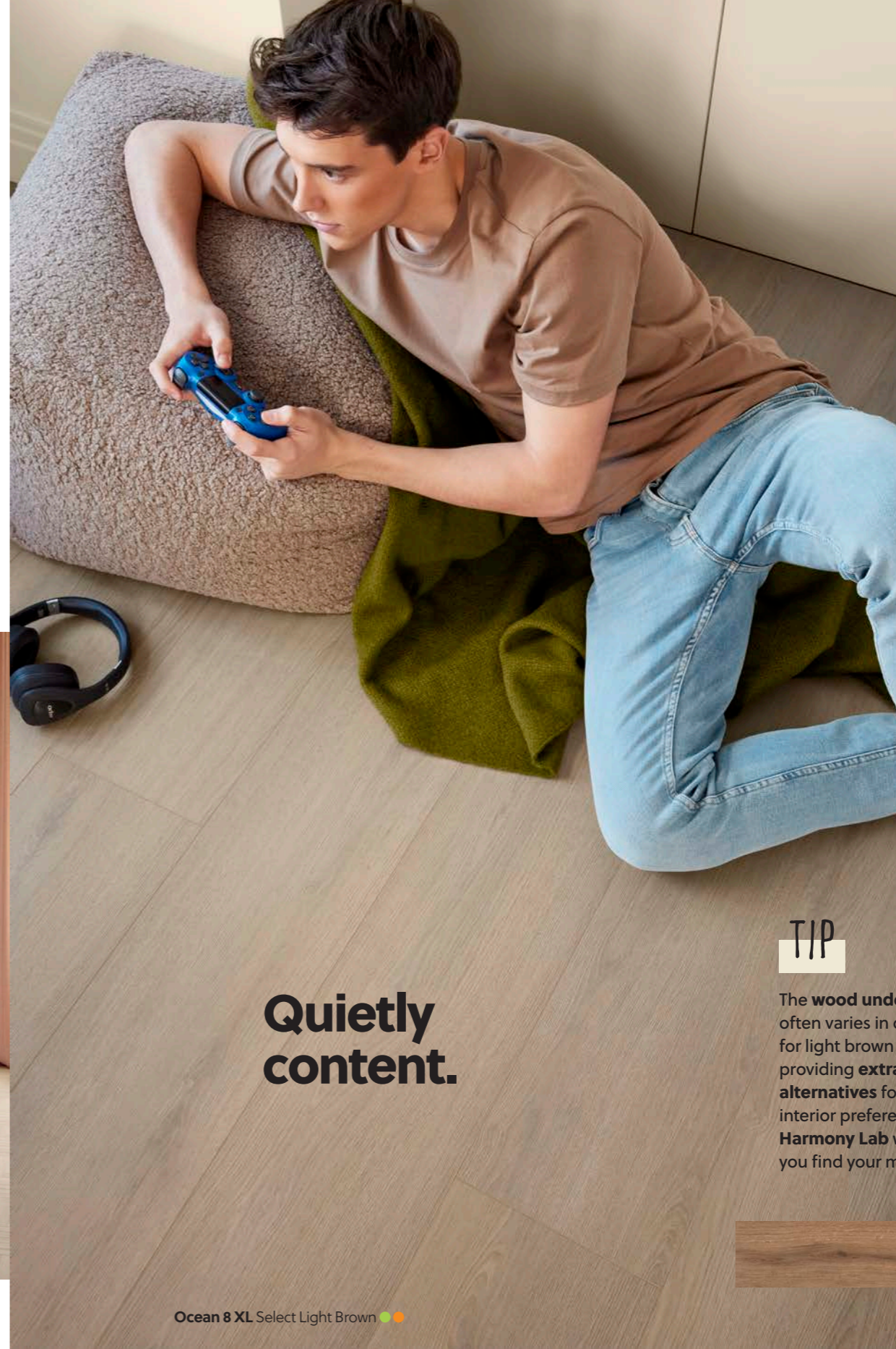
Want a softer colour that's slightly darker in shade? The **soothing, earthy tones** of these light brown floors absorb more light, making a colder space instantly seem warmer and cosier. Turn your room into a **comfortable little cocoon** with these **muted hues** and enjoy a more informal, homey style that works so well with these colours.

Light browns.

Ocean 8 V4
Crush Brown Natural ●●



Chateau+ Bloom Light Brown ●



Quietly content.

Ocean 8 XL Select Light Brown ●●●

TIP

The **wood undertone** often varies in colour for light brown floors, providing **extra alternatives** for your interior preferences. **Harmony Lab** will help you find your match.



Take a look at all our **light brown floors** on p. 52.



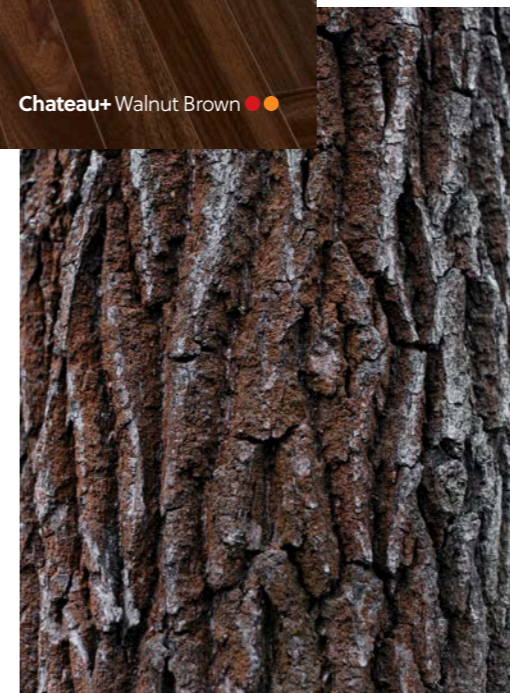
Darks.

Ocean 8 V4 Java Brown ●●



The perfect outlet for your personal style.

Chateau+ Walnut Brown ●●



Forever **stylish and sophisticated**: it's worth considering a darker floor colour, because the final result is totally worth it. Fully release your creativity on these charming floors, because they work best combined with **bold, vibrant shades** and **contrasting furniture**. Make your room pop and leave everyone impressed!



Ocean 8 V4 Merbau Brown ●

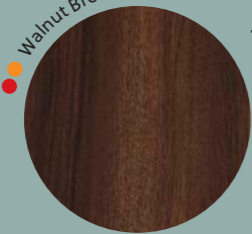
TIP

Big, bright spaces will become a lot more **intimate and inviting** with a **darker floor**.

Explore the full range of **dark floors** on p. 53.

Choose the floor that's right for you.

Walnut Brown



Wall colour NCS: S 0907-Y30R



furniture



décoration



Chateau+ Walnut Brown

Picked your perfect shade? That's great! The next step is determine **which plank size you prefer** and **which extra features your floor requires**, depending on the installation area. Find out what features work best for your installation.

Find the floor for your lifestyle.

1

I need a water-resistant floor.

Your best choice for a room where you're **more likely to encounter liquids and spills**, such as bathrooms or entry hallways.

Find out more about our **water-resistant technology**: p. 34

2

Looking for a herringbone floor?

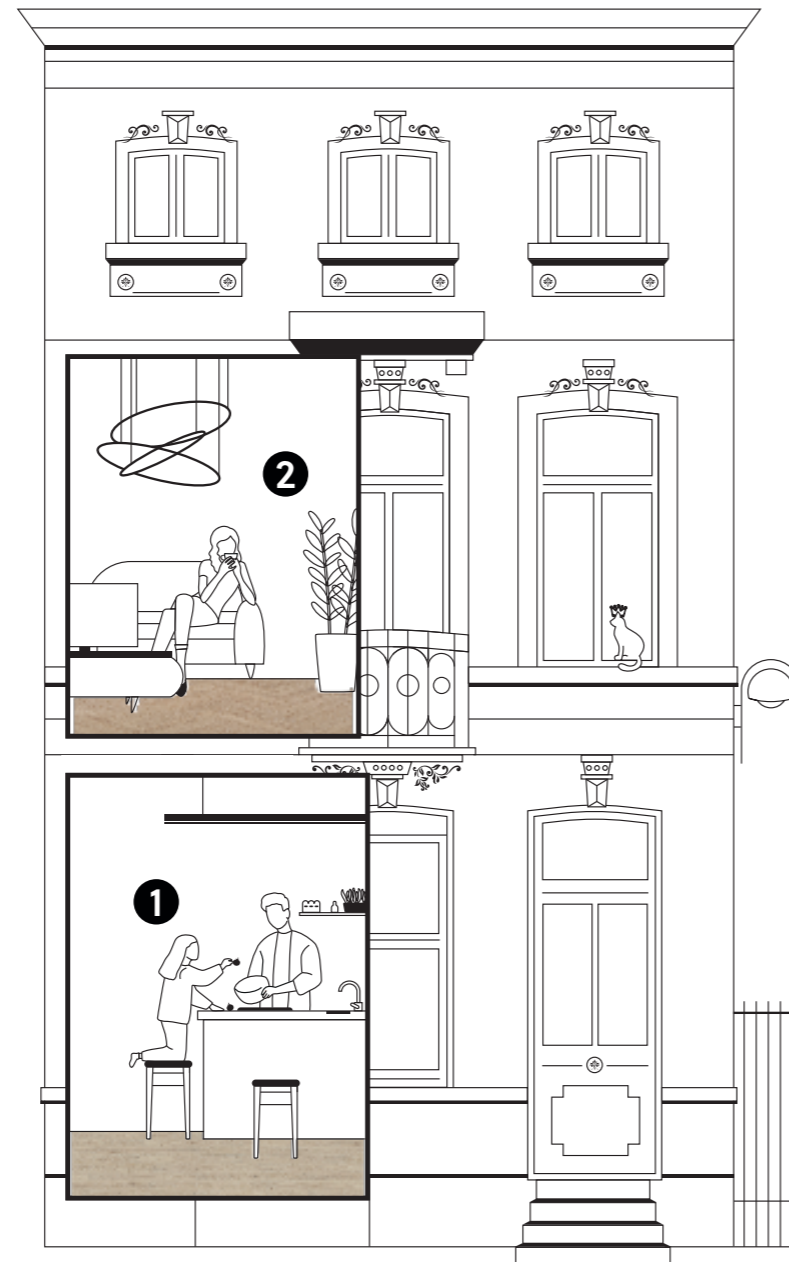
Our classy and sassy 100% water-resistant **herringbone laminate** is sure to be an eye-catcher in every room.

Find out more about our **available plank sizes**: p. 36

LOOKING FOR EXTRA-LARGE PLANKS?

Sometimes longer planks just look better in a certain space! Find out which planks you can **supersize**.

Find out more about our **available plank sizes**: p. 36



3

I need a floor for my business.

You'll need a floor that's suited to more **intensive foot traffic**. Our class 33 laminate floors are great in public setting thanks to their higher abrasion class and commercial warranty.

Find out more about our **commercial solutions**: p. 38

4

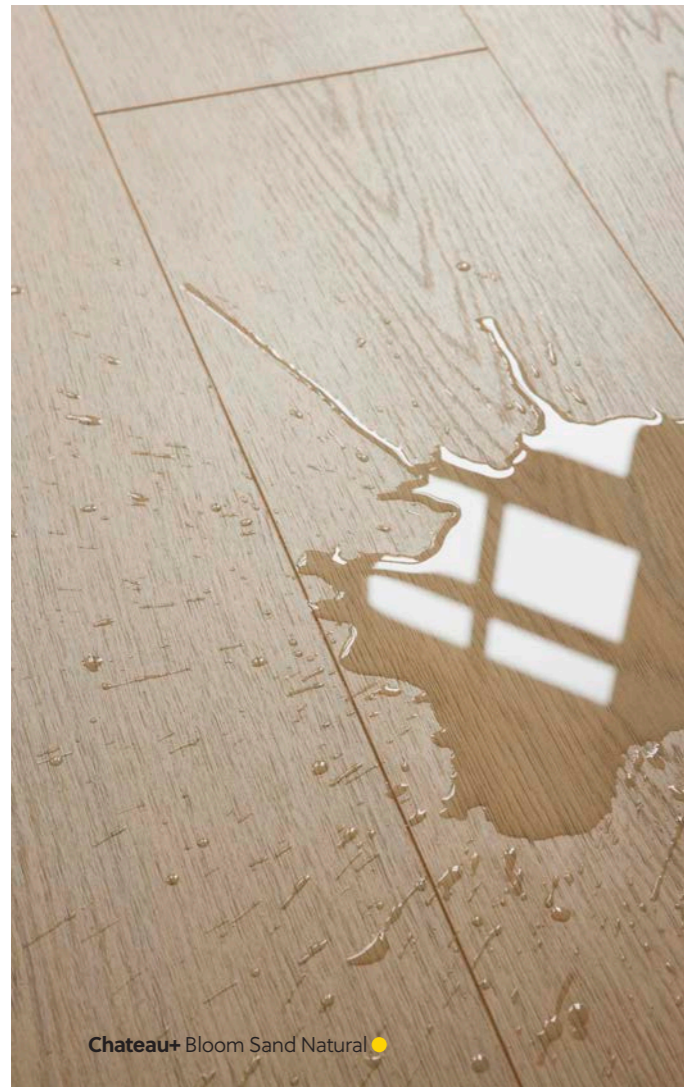
Looking for extra silence?

Use the Excellence Plus underlay beneath your laminate floor, ideal for rooms where extra silence makes all the difference.

Find out more about our **underlays**: p. 56



Looking for a 100% water-resistant floor?



A laminate floor is unable to absorb any liquid on its surface, making it thoroughly **splash resistant**. But what if you're looking for something more resilient for your kitchen, bathroom, laundry room, or entry hallway?

That's where our innovative **hydro+ technology** comes into play. This water-repellent coating further protects your floor around the edges of each plank. As a result, you'll have a **100% water-resistant floor**, able to withstand all kinds of liquids.



100% water resistant

This is the ideal flooring solution for rooms where you're more likely to **encounter liquids and spills**. Our hydro+ technology will guarantee a **100% water-resistant floor**.

Want to discover our water-resistant floors? Check out our **Ocean+** (p. 42) and **Chateau+** (p. 44) collections.



DISCOVER OUR PIONEERING HYDRO+ TECHNOLOGY

Back in 2008, BerryAlloc was the first company to introduce water-resistant laminate to the market with its innovative hydro+ technology. This **unique formulation** has indisputably proven its durability, quality, and value for money after years of exposure to daily situations.

How does it work?

A **hydrophobic coating** is applied to all sides of the plank, effectively repelling water when it comes into contact with the joints. Applied during manufacturing, the Ocean+ and Chateau+ collections are completely water resistant when they leave the production line.

Curious to see it in action? **Watch the video!**



100%
WATER-REPELLENT
COATING

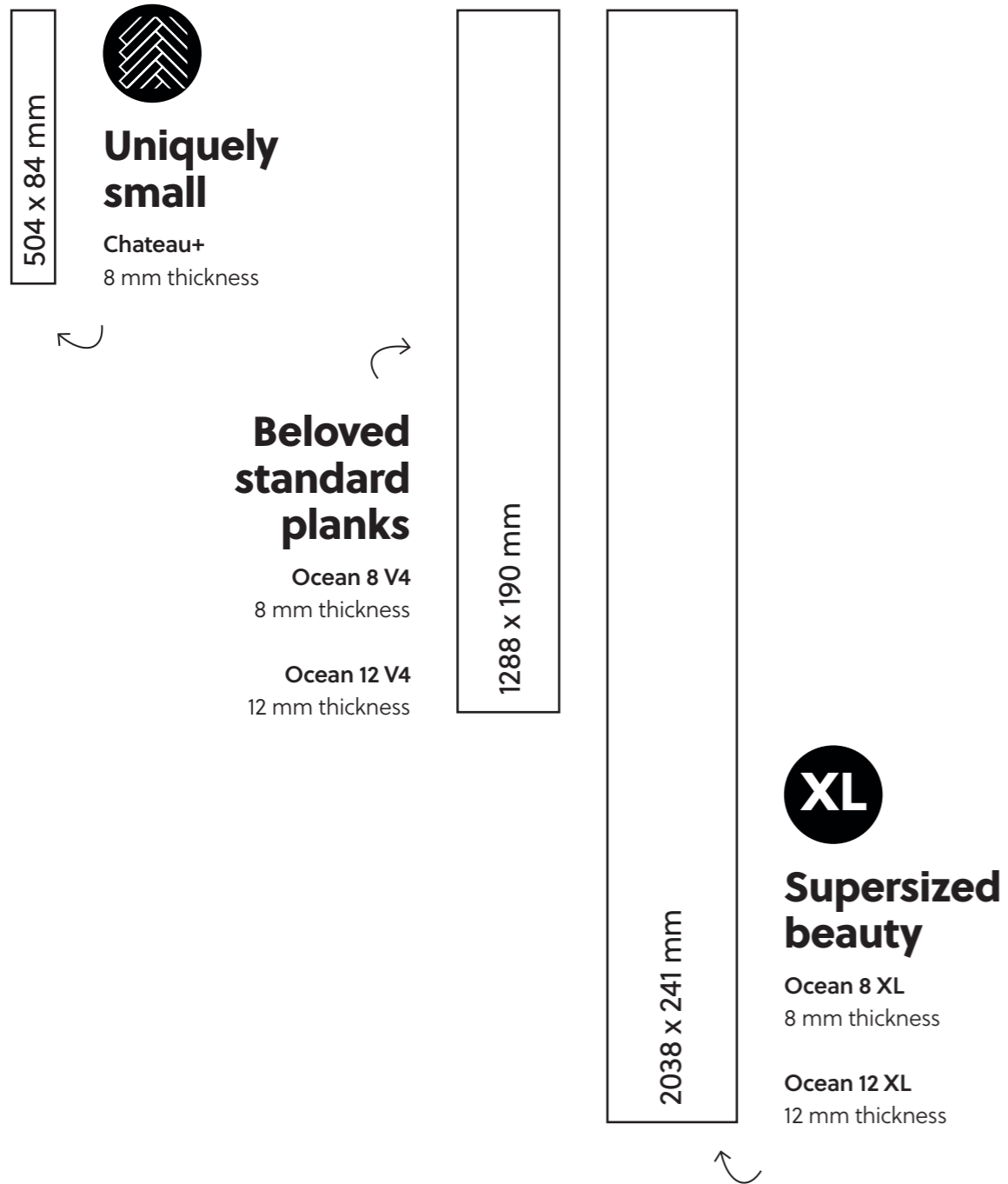


Ocean 8 V4 Jazz Light Grey

Remember to use your **hydro+ accessories** when installing your floor for a fully water-resistant finish! You'll find them on p. 59.



Planks of all shapes and sizes.



Ocean 12 V4 Select Sand Natural

Need a floor for a commercial space?

Are you looking for a durable floor to install in a commercial space? Offices, restaurants, hotels, healthcare, shops... These beautiful wood looks will brighten up any room. Plus, our laminate floors are made to be tough, with high levels of abrasion and scratch resistance.

Extra tough

All our collections belong to a level 33 usage class and a level 5 abrasion class. Their higher impact and wear resistance gives them a ten-year warranty for a commercial use, making them perfectly suitable for a business setting.

Our sustainability certifications

Our laminate floors carry a number of sustainability certifications. Discover them below.

BREEAM INTERNATIONAL

Our laminate floors contribute by earning up to 17 BREEAM credits in five different categories.

LEED

Our laminate floors contribute by earning up to 14 LEED points in three different categories.

Indoor Air Quality A+

Our Chateau+ collection holds an A level for Indoor Air Quality, and our Ocean+ laminate ranges an A+ level, producing the lowest possible VOC (volatile organic compounds) amounts and ensuring that all indoor air quality standards are met in full).



Ocean 12 V4 Select Sand Natural ●



Ocean 12 XL Jazz XL Sand Natural ●

DID YOU KNOW?

↳ BerryAlloc is a pioneer in water-resistant laminate flooring, being the first to introduce the water-repellent technology to the market back in 2008.



for intensive use
class 33 - AC5



100% water
resistant



100% water-
repellent
coating



10 years
commercial
warranty



premium
quality



natural wood
design



scratch
resistant



easy
installation



easy
maintenance

PEFC

All our wood is sourced from sustainably managed forests (PEFC Certified PEFC/07-31-229) that meet the strictest environmental, social, and economic requirements.

Environmental Product Declaration (EPD)

We have an EPD available for our laminate products in accordance with ISO 14025 and EN 15804+A2.

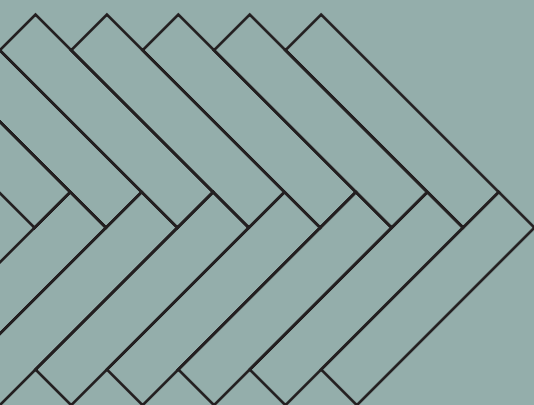
Fiche de Déclaration Environnementale et Sanitaire (FDES)

We have an FDES available for our laminate products in accordance to NF EN ISO 14025 and NF EN 15804+A1.

Other certifications

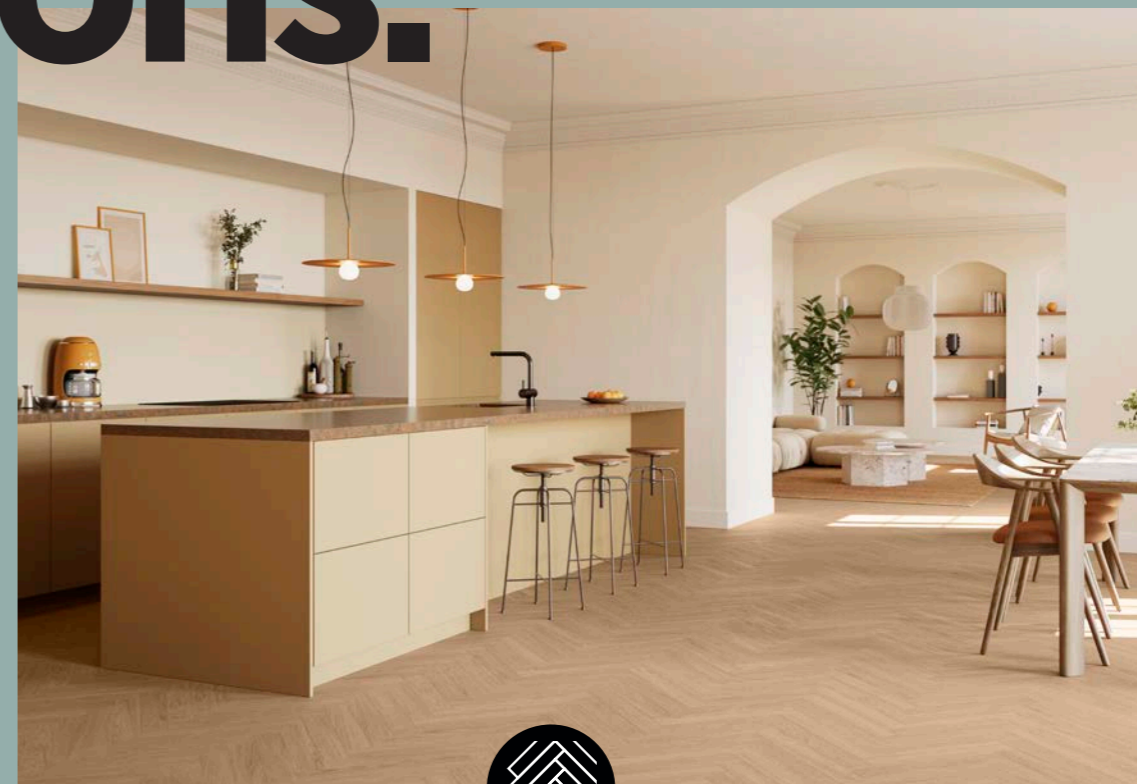
CE, REACH, ISO 9001 (quality management), fire resistance class Cfl-s1, phthalate-free.

Discover the collections.



/ ocean+.

Need a floor for a room where you're more likely to encounter water? Enjoy a **100% water-resistant** Ocean+ laminate floor throughout your home thanks to our **pioneering hydro+ technology**. This option is available for **all 50 designs** in standard planks and a selection of designs in XL, or thicker 12-mm floors.



/ chateau+.

The **15 natural wood designs** and **uniquely small and narrow planks** of our Chateau+ collection are perfect for recreating the beloved parquet **herringbone** style that's lasted centuries. Elevate any room with this premium-quality laminate floor that's highly scratch resistant, **100% water resistant**, and guaranteed to last a lifetime, adding sophistication and a wow effect to your interior.

MIX & MATCH

Keep in mind that **a select amount of decors are available throughout the different collections** if you wish to mix and match styles and finishes across different rooms!

This is Ocean+.

All available collections and options for a 100% water-resistant floor.

100% water resistant



/ ocean 8 V4.

Plank attributes



Decors	50
Thickness	8 mm
Size	1288 x 190 mm
Bevels	4
Locking system	DuoLoc

/ ocean 12 V4.

Decors	12
Thickness	12 mm
Size	1288 x 190 mm
Bevels	4
Locking system	PentaLoc

/ ocean 8 XL.

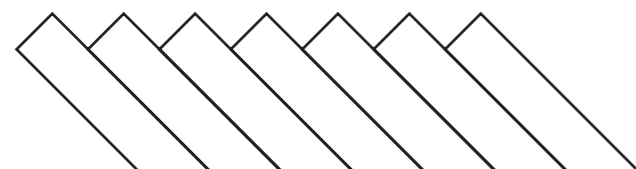
Decors	13
Thickness	8 mm
Size	2038 x 241 mm
Bevels	4
Locking system	PentaLoc

XL extra long

/ ocean 12 XL.

Decors	10
Thickness	12 mm
Size	2038 x 241 mm
Bevels	4
Locking system	PentaLoc

XL extra long

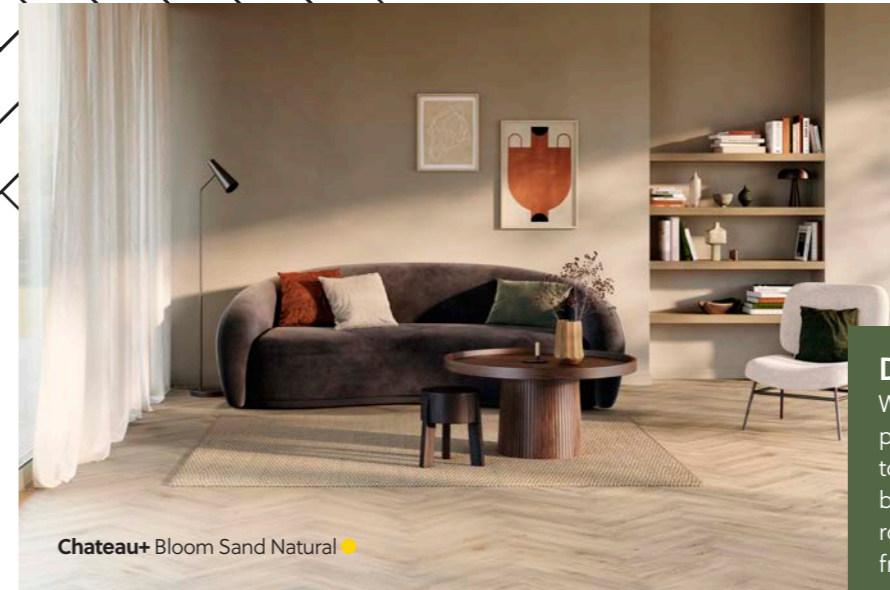


This is Chateau+.

15 available decors for a 100% water-resistant herringbone floor.



herringbone laminate



Chateau+ Bloom Sand Natural ●



Did you know?

With its elegant and narrow plank format, boasting a width-to-length ratio of 1:6, Chateau+ brings true visual allure to any room! Drawing inspiration from the timeless elegance of ancient herringbone floors, it adds an authentic and delightful ambiance into every interior.



Chateau+ Gyant Dark Brown ●

/ chateau+.

Decors
15

Thickness
8 mm

Size
504 x 84 mm

Bevels
4

Locking system
OmniLoc

A & B planks

Plank attributes



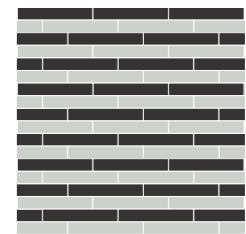
Mix & match:
Chateau+ Java Brown ●●
Chateau+ Java Light Grey ●●

PICK A PATTERN

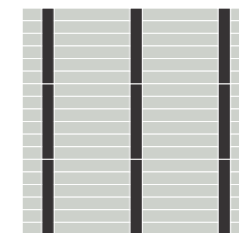
Who said you had to stick to the status quo? Chateau+ offers **four different installation patterns**: time to get creative and choose the style that suits you best. Check the installation instructions on how to best achieve these patterns.



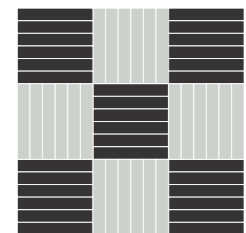
Herringbone
A & B planks



Shipdeck
A planks



Ladder
A planks



Mosaic
A & B planks

Whites.



1. **Retro Chic Blue Grey**
 Ocean 8 V4 62003090
 Skirting 63003217
 T-profile 63001955
 CC* ● blue
2. **Chestnut White**
 Ocean 8 V4 62003061
 Chateau+ A 62002706
 Chateau+ B 62002707
 Skirting 63001174
 T-profile 63001461
 CC ● yellow
3. **Charme White**
 Ocean 8 V4 62003060
 Skirting 63001170
 T-profile 63001458
 CC ● blue



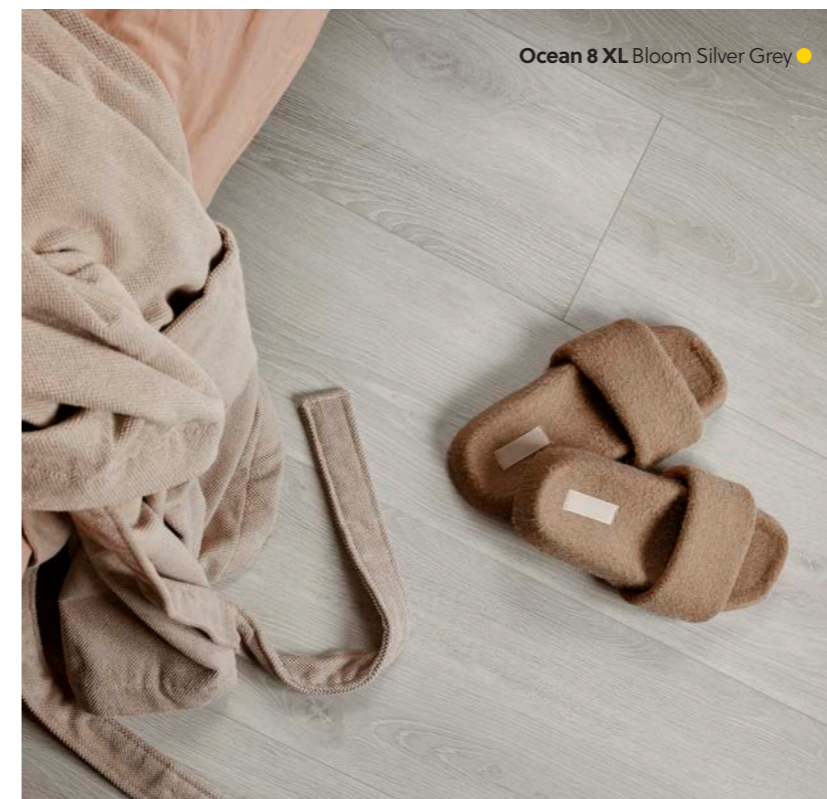
Ocean 8 V4 Chestnut White ●

Greys.



Like what you see?
Floorfit it out!

1. **Crush Light**
 Ocean 8 V4 62003063
 Skirting 63001171
 T-profile 63001459
 CC ● red
2. **Bloom Silver Grey**
 Ocean 8 V4 62003054
 Ocean 12 V4 62002498
 Ocean 8 XL 62003117
 Ocean 12 XL 62002508
 Skirting 63003068
 T-profile 63003128
 CC ● yellow
3. **Jazz (XL) Light Grey**
 Ocean 8 V4 62003083
 Ocean 12 V4 62002503
 Ocean 8 XL 62002975
 Ocean 12 XL 62002513
 Skirting 63001181
 T-profile 63001468
 CC ● purple
4. **Texas Grey**
 Ocean 8 V4 62003096
 Skirting 63003225
 T-profile 63001415
 CC ● yellow
5. **Gyant Light Grey**
 Ocean 8 V4 62003073
 Skirting 63003212
 T-profile 63001420
 CC ● orange
6. **Java Light Grey**
 Ocean 8 V4 62003081
 Chateau+ A 62002714
 Chateau+ B 62002715
 Skirting 63001181
 T-profile 63001468
 CC ● purple
7. **Epic Grey**
 Ocean 8 V4 62003066
 Skirting 63003084
 T-profile 63003144
 CC ● green



Ocean 8 XL Bloom Silver Grey ●

(*) Colour character: discover the science behind the colour character of your floor on p. 12.

Light naturals.

Ocean 8 V4
Texas Light Natural ●



There are
no wrong
choices here.



Ocean 8 V4
Texas Light Natural ●

1. **Gyant Light**
Ocean 8 V4 62003072
Chateau+ A 62002702
Chateau+ B 62002703
Skirting 63003211
T-profile 63001421
CC* ● yellow
2. **Canyon Light**
Ocean 8 V4 62003056
Skirting 63003218
T-profile 63001441
CC ● yellow
● green
3. **Ragnar Light Sand**
Ocean 8 V4 62003087
Skirting 63003076
T-profile 63003136
CC ● yellow
4. **Elm Light**
Ocean 8 V4 62003064
Skirting 63001186
T-profile 63001471
CC ● yellow

5. **Epic Light**
Ocean 8 V4 62003068
Ocean 12 V4 62003041
Skirting 63003082
T-profile 63003142
CC ● orange
6. **Select Light Sand**
Ocean 8 V4 62003091
Ocean 8 XL 62002978
Skirting 63003081
T-profile 63003141
CC ● yellow
7. **Gyant (XL) Light Sand**
Ocean 8 V4 62003075
Ocean 12 V4 62002500
Ocean 8 XL 62003118
Ocean 12 XL 62002510
Skirting 63003064
T-profile 63003124
CC ● yellow

8. **Texas Light Natural**
Ocean 8 V4 62003097
Chateau+ A 62002724
Chateau+ B 62002725
Skirting 63003224
T-profile 63001432
CC ● yellow
● orange
9. **Gyant Light Natural**
Ocean 8 V4 62003074
Skirting 63001132
T-profile 63001426
CC ● yellow
10. **Bloom Light Natural**
Ocean 8 V4 62003051
Skirting 63001167
T-profile 63001455
CC ● red

11. **Bloom Sand Natural**
Ocean 8 V4 62003053
Ocean 12 V4 62002497
Ocean 8 XL 62002972
Ocean 12 XL 62002507
Chateau+ A 62002712
Chateau+ B 62002713
Skirting 63002991
T-profile 63002997
CC ● yellow
12. **Bloom Natural**
Ocean 8 V4 62003052
Skirting 63003220
T-profile 63001428
CC ● orange

13. **Charme Light Natural**
Ocean 8 V4 62003058
Chateau+ A 62002720
Chateau+ B 62002721
Skirting 63003222
T-profile 63001449
CC ● yellow
14. **Gyant (XL) Sand Natural**
Ocean 8 V4 62003077
Ocean 12 V4 62002499
Ocean 8 XL 62002977
Ocean 12 XL 62002509
Skirting 63003063
T-profile 63003123
CC ● yellow

15. **Jazz (XL) Sand Natural**
Ocean 8 V4 62003084
Ocean 12 V4 62002504
Ocean 8 XL 62002973
Ocean 12 XL 62002514
Skirting 63003056
T-profile 63003116
CC ● yellow
16. **Select Sand Natural**
Ocean 8 V4 62003093
Ocean 12 V4 62002505
Ocean 8 XL 62003121
Ocean 12 XL 62002515
Skirting 63003080
T-profile 63003140
CC ● yellow

(*) Colour character: discover the science behind the colour character of your floor on p. 12.



Check me out
on Floorfit!

Naturals.



- | | | | | | | | | | | |
|-----------------------------------|----------|--|--|--|--|--|--|--|--|--|
| 1. Epic Natural | | | | | | | | | | |
| Ocean 8 V4 | 62003069 | | | | | | | | | |
| Ocean 12 V4 | 62003042 | | | | | | | | | |
| Skirting | 63003083 | | | | | | | | | |
| T-profile | 63003143 | | | | | | | | | |
| CC* | orange | | | | | | | | | |
| 2. Canyon Natural | | | | | | | | | | |
| Ocean 8 V4 | 62003057 | | | | | | | | | |
| Skirting | 63003219 | | | | | | | | | |
| T-profile | 63001445 | | | | | | | | | |
| CC | orange | | | | | | | | | |
| 3. Bloom Warm Natural | | | | | | | | | | |
| Ocean 8 V4 | 62003055 | | | | | | | | | |
| Skirting | 63003067 | | | | | | | | | |
| T-profile | 63003127 | | | | | | | | | |
| CC | yellow | | | | | | | | | |
| 4. Select Natural | | | | | | | | | | |
| Ocean 8 V4 | 62003092 | | | | | | | | | |
| Skirting | 63003079 | | | | | | | | | |
| T-profile | 63003139 | | | | | | | | | |
| CC | yellow | | | | | | | | | |
| 5. Gyant (XL) Warm Natural | | | | | | | | | | |
| Ocean 8 V4 | 62003080 | | | | | | | | | |
| Ocean 12 V4 | 62002501 | | | | | | | | | |
| Ocean 8 XL | 62003119 | | | | | | | | | |
| Ocean 12 XL | 62002511 | | | | | | | | | |
| Skirting | 63003065 | | | | | | | | | |
| T-profile | 63003125 | | | | | | | | | |
| CC | yellow | | | | | | | | | |
| 6. Gyant Natural | | | | | | | | | | |
| Ocean 8 V4 | 62003076 | | | | | | | | | |
| Skirting | 63003213 | | | | | | | | | |
| T-profile | 63001425 | | | | | | | | | |
| CC | yellow | | | | | | | | | |
| 7. Crush Natural | | | | | | | | | | |
| Ocean 8 V4 | 62003065 | | | | | | | | | |
| Skirting | 63003215 | | | | | | | | | |
| T-profile | 63001436 | | | | | | | | | |
| CC | yellow | | | | | | | | | |
| 8. Texas Light Brown | | | | | | | | | | |
| Ocean 8 V4 | 62003099 | | | | | | | | | |
| Chateau+ A | 62002726 | | | | | | | | | |
| Chateau+ B | 62002727 | | | | | | | | | |
| Skirting | 63001165 | | | | | | | | | |
| T-profile | 63001453 | | | | | | | | | |
| CC | orange | | | | | | | | | |
| 9. Java Natural | | | | | | | | | | |
| Ocean 8 V4 | 62003082 | | | | | | | | | |
| Chateau+ A | 62002716 | | | | | | | | | |
| Chateau+ B | 62002717 | | | | | | | | | |
| Skirting | 63001175 | | | | | | | | | |
| T-profile | 63001462 | | | | | | | | | |
| CC | orange | | | | | | | | | |
| 10. Majesty Natural | | | | | | | | | | |
| Ocean 8 V4 | 62003086 | | | | | | | | | |
| Skirting | 63001162 | | | | | | | | | |
| T-profile | 63001450 | | | | | | | | | |
| CC | orange | | | | | | | | | |
| 11. Ragnar Warm Natural | | | | | | | | | | |
| Ocean 8 V4 | 62003088 | | | | | | | | | |
| Skirting | 63003077 | | | | | | | | | |
| T-profile | 63003137 | | | | | | | | | |
| CC | green | | | | | | | | | |

(*) Colour character: discover the science behind the colour character of your floor on p. 12.



Can you
picture your
dream floor?



Is it a match?
You'll know
with Floorfit!



Light browns.

Ocean 8 XL
Select Light Brown ●●



- 1. Select Light Brown**
Ocean 8 V4 62003089
Ocean 12 V4 62002506
Ocean 8 XL 62003120
Ocean 12 XL 62002516
Skirting 63003078
T-profile 63003138
CC* ● orange
● green

- 2. Crush Brown Natural**
Ocean 8 V4 62003062
Skirting 63003216
T-profile 63001423
CC ● orange
● red

- 3. Bloom Light Brown**
Ocean 8 V4 62003050
Ocean 8 XL 62002974
Chateau+ A 62002710
Chateau+ B 62002711
Skirting 63002992
T-profile 63002998
CC ● red

- 4. Gyant (XL) Brown Natural**
Ocean 8 V4 62003070
Ocean 8 XL 62002976
Skirting 63003062
T-profile 63003122
CC ● orange

- 5. Epic Brown**
Ocean 8 V4 62003067
Skirting 63003085
T-profile 63003145
CC ● orange
● green

Darks.



- 1. Merbau Brown**
Ocean 8 V4 62003085
Chateau+ A 62002708
Chateau+ B 62002709
Skirting 63001166
T-profile 63001454
CC ● red

- 2. Teak Brown**
Ocean 8 V4 62003094
Chateau+ A 62002728
Chateau+ B 62002729
Skirting 63001177
T-profile 63001464
CC ● orange

- 3. Java Brown**
Ocean 8 V4 62003079
Chateau+ A 62002718
Chateau+ B 62002719
Skirting 63003221
T-profile 63001444
CC ● yellow
● red

- 4. Texas Brown**
Ocean 8 V4 62003095
Skirting 63003226
T-profile 63001414
CC ● orange

- 5. Gyant Dark Brown**
Ocean 8 V4 62003071
Chateau+ A 62002704
Chateau+ B 62002705
Skirting 63003214
T-profile 63001427
CC ● orange

- 6. Gyant (XL) Warm Brown**
Ocean 8 V4 62003078
Ocean 12 V4 62002502
Ocean 8 XL 62002979
Ocean 12 XL 62002512
Skirting 63003066
T-profile 63003126
CC ● red

- 7. Walnut Brown**
Ocean 8 V4 62003098
Chateau+ A 62002730
Chateau+ B 62002731
Skirting 63003227
T-profile 63002879
CC ● red
● orange

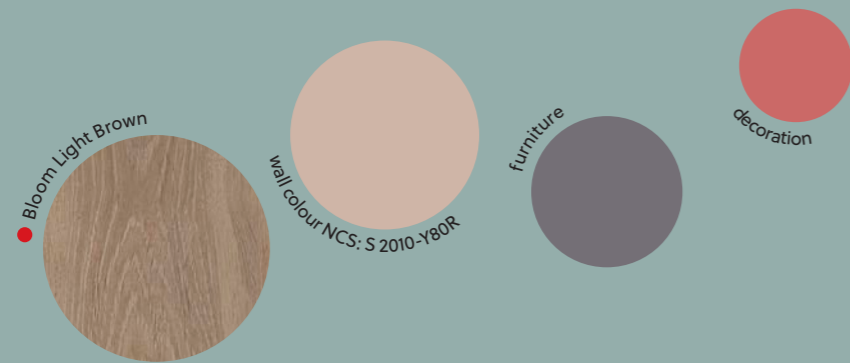
- 8. Charme Black**
Ocean 8 V4 62003059
Chateau+ A 62002722
Chateau+ B 62002723
Skirting 63003223
T-profile 63001418
CC ● purple
● red



Ocean 8 V4 Java Brown ●●

(*) Colour character: discover the science behind the colour character of your floor on p. 12.

Don't forget the lovely details.



Ocean 8 V4 Bloom Light Brown ●

Install.

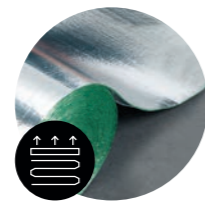
Yay! You've just picked out your new floor. **What's next?** Now's the moment to determine **which products** you need in your installation and decoration journey. These will help your floor achieve that wow-factor and provide you with optimal living comfort. Not sure about what you need? We'll help you with every step of the way.

Underlays

Start by selecting a suitable underlay.

A high-quality underlay can prevent creaking and reduces the sound of your steps in the room and the floor below. It's an essential item to keep your floor in great shape and will significantly improve your living comfort once installed.

The **best all-rounder** and required for our **herringbone laminate collection**.



Excellence Plus
10 m² – 2,5 mm



Excellence Impact+
12 m² – 3 mm



Excellence Go 60
15 m² – 2 mm

 Corrects irregularities and protects locking system	✓	✓	✓
 Impact sound The sound that gets carried to the room below	-21 dB	-19 dB	-19 dB
 Reduces walking sound The sound of your footsteps in the room	●●●●	●●●○	●●○○
 High impact resistance	●●○○	●●●●	●●●○
 Suitable for underfloor heating/cooling	●●●●	●●○○	●●●○



Underlay Excellence Plus

↘ You can find **all reference numbers** for our accessories on p. 77

All our underlays have been tested and approved for all BerryAlloc laminate collections – with the exception of our herringbone laminate collection, which should always be installed alongside Excellence Plus. They provide:

- A **flat base** to help correct small irregularities. This will support the necessary expansion behaviour while guaranteeing perfect performance.
- A combination of great **acoustic absorption** and **low thermal resistance**.
- An **integrated moisture barrier** to **protect** against rising damp.



Installation tools

Use our DuoLoc tapping block or our unique and super efficient BerryAlloc installation tool for a fast and flawless installation.



Ocean 8 V4 Epic Natural ●



Hydro+ kits for Ocean+ and Chateau+

To fully protect your Ocean+ and Chateau+ floor around the edges of the room, you'll need **the right accessories for a 100% water-resistant installation**. Our hydro+ kits make sure your floor is able to expand and remain water resistant at the same time.

Fillertwine

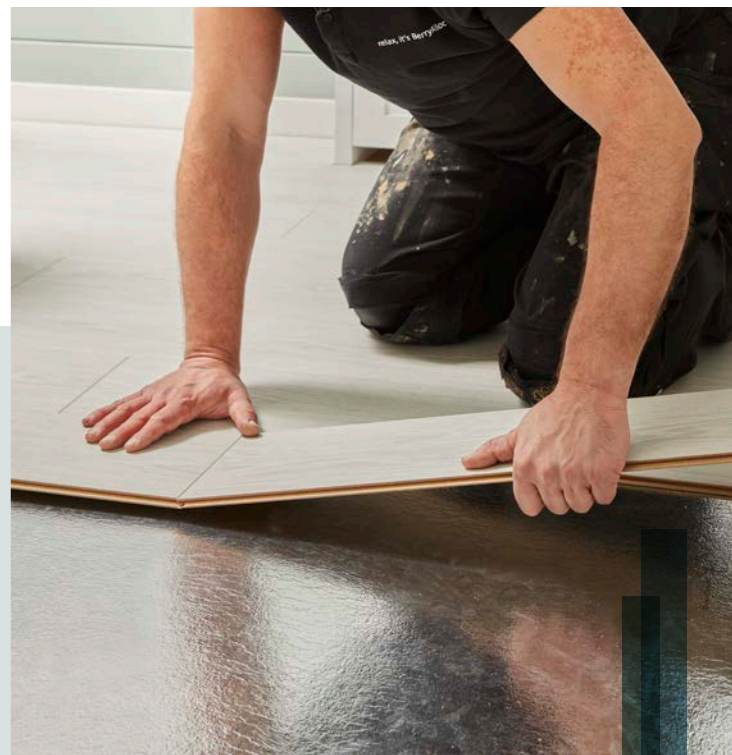
Use the Fillertwine joint sealing strip as a base for sealant. Fill in all expansion gaps with Fillertwine to make sure your floor can still shrink and expand, without exposing it to water.

10 m / Ø 8mm

Hydro+ sealant

This specially developed sealant should be used on top of the Fillertwine in expansion points at perimeters, under doorways and around pipes. The hydro+ sealant protects the edges of your floor from coming into contact with humidity.

310 ml



A QUICK AND EASY INSTALLATION

Our laminate floors are easy to install and require few special tools. There are **three different locking systems available**:

- **DuoLoc** for our standard planks
- **PentaLoc** for our XL planks
- **OmniLoc** for our herringbone planks

You'll find detailed installation instructions available in the packaging and on our website. Make sure to read the instructions beforehand and closely follow each step during installation.



Check out our **installation videos** on **YouTube!**



Finish.

Profiles

Remember to think about using the right profiles so your floor can smoothly transition from one room to another, all while respecting the necessary expansion behaviour. There are different profiles for different requirements, all available in **matching colours** to your floor or in a modern **aluminium**. Discover which ones work for you.

Ocean 8 V4 Select Light Sand ●



Matching T-Profile

To connect two floors of the same height.
2400 x 40 x 8 mm
(L x W x H)

Match your floor



TIP

Matching skirtings will make your **floor seem larger** whereas **paintable skirtings** will make your **walls seem longer**.



Match your wall

Skirtings

Time to think about that finishing touch. Our skirtings create a neat and tidy transition between wall and floor. Do you want **matching skirtings**, fully in line with your new floor? Or **white, paintable** skirtings to take you in any decoration direction? Your choice!

Matching skirting

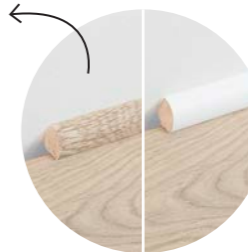
Installation: glue or clips
2400 x 12 x 60/80 mm
(L x W x H)

White skirtings

Installation glue
2400 x 12 x 60/80 mm (standard)
2400 x 14 x 100/110 mm (English)
2400 x 26 x 110 mm (Cover skirting)
(L x W x H)

Matching quarter round

(only for a selection of decors)
Installation: glue
2400 x 14 x 14 mm
(L x W x H)



White quarter round

Installation: glue
2400 x 14 x 14 mm
(L x W x H)

WHAT ABOUT INSTALLATION?

There are **two ways to attach** your **matching skirting board** to the wall.



Glue it
Use our **BerryAlloc glue**.



Fix it
Use **clips* and plugs**.

(*) Only for 60 and 80 mm

Stairnose

Make your stairs blend in perfectly with your floor and interior.

Our stairnose perfectly matches the floor in colour and structure, providing the same level of wear resistance. Its strong locking system guarantees a smooth, edge-free transition between the floor and stairs. Easy to install, clean, and maintain, it is an ideal solution for stair renovations.

Before



After

Maintain.

Make those moments of joy on your new floor last longer by regularly using our specially developed **BerryAlloc laminate cleaner**. It's suitable for first-time maintenance as well as regular use and will provide extra protection for your floor. Plus, it's **biodegradable** and has a pleasant fragrance. All it requires is one capful to a bucket of water.



**BerryAlloc
laminate cleaner**

1 litre



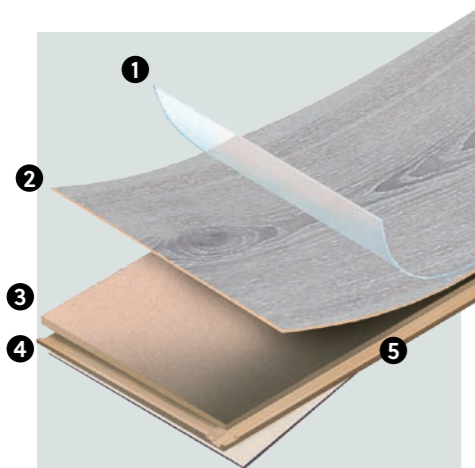
**Chores don't
have to be
a bore.**

Ocean 8 V4 Ragnar Light Sand ●

There are a lot of things to think about when choosing and planning to install a new floor. And maybe you've still got some questions left unanswered. We've listed **the most frequently asked** ones here.

Questions? We've got answers.

Choosing your floor.



What is a BerryAlloc laminate floor made of?

- A laminate floor consists of:
1. An **overlay** that determines the strength and resistance of your floor
 2. A **decor paper** for the design
 3. A **high-density fibreboard (HDF) core**
 4. A **counterbalance** to stabilise and protect the HDF core
 5. The **hydro+** water-repellent coating

WHY WOULD I CHOOSE A LAMINATE FLOOR?

With so many different flooring choices available, it can be a struggle to figure out which floor suits your lifestyle best. Why laminate then? This type of floor brings you many advantages. It's an **affordable** and **easy-maintenance** alternative for other hardwood flooring options – with equally **beautiful wood looks** and the added bonus of being extremely **scratch resistant**. And these good looks won't fade, since laminate floors are completely **UV resistant**. It's also 100% water resistant, giving you the opportunity to recreate a wonderfully natural theme throughout your entire home. Plus, DIYers will be happy to hear that the **installation is simple** and straightforward. A stress-free solution for a happy home!

Where can I buy a BerryAlloc floor?

You'll find an overview of certified **BerryAlloc dealers** in your local area on our **website**.



Find your BerryAlloc dealer!

In which rooms can I install a laminate floor?

As for commercial use, all our BerryAlloc laminate floors are categorized as **class 33 AC5**. They are suitable for light as well as heavy commercial use, for areas such as large offices, conference rooms, offices, shopping malls, classrooms, waiting areas, hotel lobbies,...



TIP

Need a water-resistant floor for a specific room? **Our Ocean+ and Chateau+ collections are 100% water-resistant** with the right hydro+ accessories.

Planning your installation.



TIP

Calculate at least **5% extra surface area** (for rectangular or simple spaces) and at least **10%** (for spaces with many corners, recesses, or sloping walls) when ordering your new floor to account for waste and cutting loss during installation.

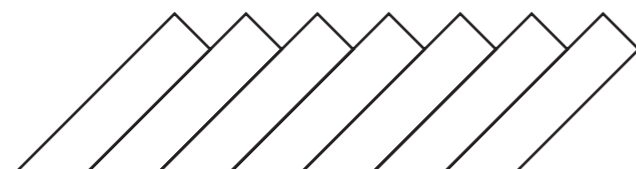
At what point should I install my floor when renovating or building?

The installation of your floor should be one of the **very last steps** during your renovation or building project. Doing so will help **avoid unnecessary damage** to your floor while carrying out other tasks.

Can I install my new laminate floor on top of my old existing one?

This depends on the floor that's already present. It **cannot** be installed on top of a carpeted floor, as this is too soft and can cause damage to the locking system. It **can** be installed on top of a tiled floor, a hard vinyl floor, or a wooden floor, but **only** if this floor is completely **level and flat**. However, using an underlay will help level out minimal height differences and can help reduce noise.

Not sure what to do? It's always better to remove your old floor and create a new, flat base. The quality of your subfloor plays a very important role in the overall installation result.





Can I install laminate on top of underfloor heating/cooling?

Yes, you can! Both **waterborne** and **electrical systems** are compatible with a laminate floor. You'll find a **detailed installation manual** for underfloor heating/cooling on the support page of our website.



Scan the QR code to read the manual.

Should I install my floor and skirting boards before or after painting my walls?

We advise you to **paint your walls before installing your floor and skirtings**. But if this isn't feasible, make sure to cover your floor with a protective surface. You wouldn't want accidental paint spills on your brand new floor!



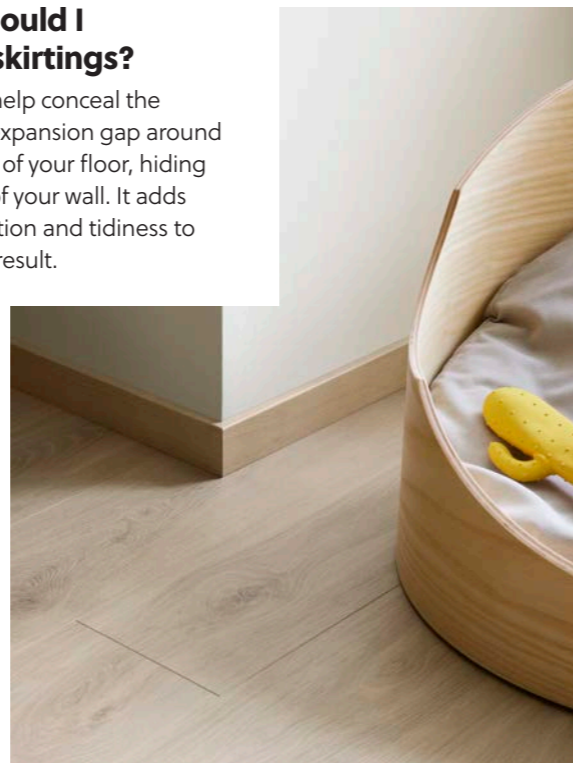
In which direction should I lay my planks?

There are a few things to consider when deciding on the direction of your planks.

1. Your floor usually looks best when it **follows the direction of natural lighting**. Place your planks so that they are vertical to the largest window or light source in your room.
2. If you're installing the same floor across multiple rooms, consider what direction looks best for both rooms to create a smooth transition.
3. If you're installing in a long, narrow room, lay your planks horizontally to make it seem wider. Got a smaller room? It'll seem longer with vertically laid planks.

Why should I install skirtings?

Skirtings help conceal the required expansion gap around the edges of your floor, hiding the base of your wall. It adds sophistication and tidiness to your final result.



Installing your floor.

WHAT STEPS SHOULD I FOLLOW WHEN INSTALLING MY NEW FLOOR?

Once you've acquired your new BerryAlloc floor, the following steps will help you achieve a successful installation:

Prior to installation

- Carefully read the installation instructions prior to installation
- Let your floor acclimatise to the room for at least 48 hours before starting installation
- Check if your subfloor is dry, level, and clean
- Place the right underlay (for a floating installation)

During installation

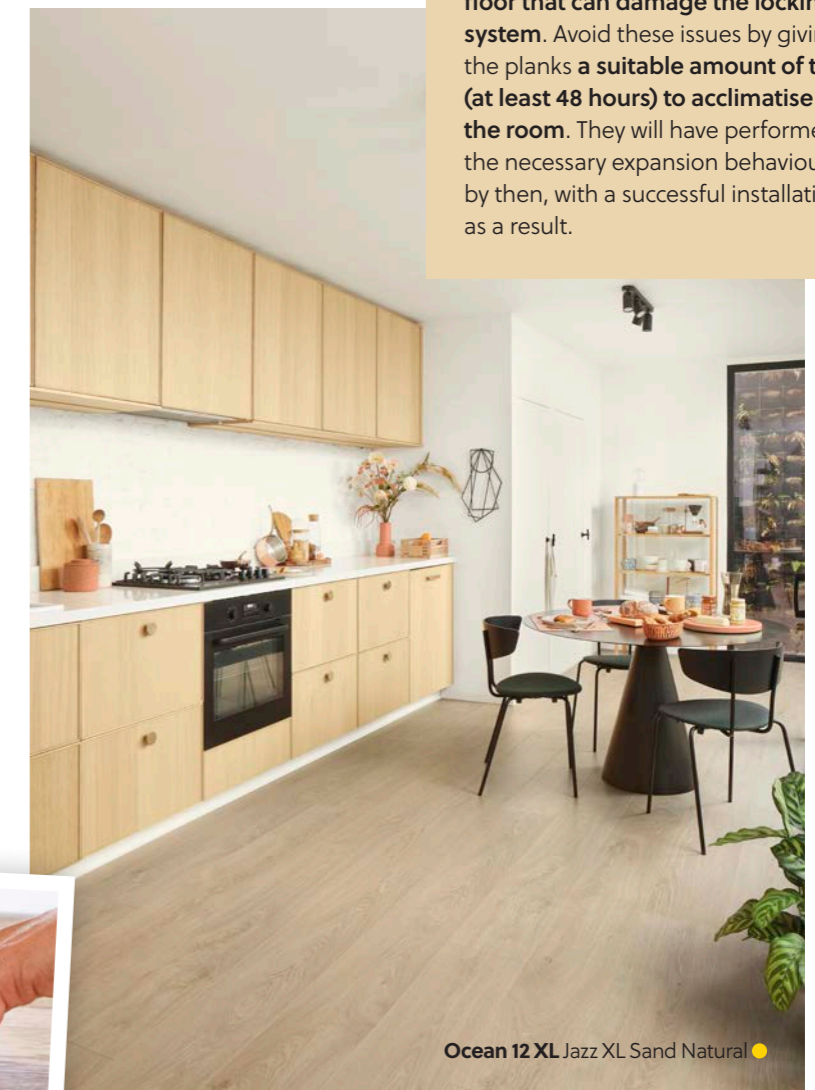
- Your floor should be installed at a room temperature of 18-25°C and a relative humidity of 40-60%
- Install your floor according to the installation instructions
- Use our hydro+ kit for a 100% water-resistant installation when placing an Ocean+ or Chateau+ laminate floor
- Install the profiles

After installation

- Install the skirtings
- Use our Laminate Cleaner to clean your new floor to remove all traces of dust and debris from the installation

Why does my floor first need to acclimatise to the room before installation?

As mentioned, a laminate floor **will expand or shrink** depending on room climate conditions. Temperature and humidity can differ between the storage place and installation area. If the planks are installed immediately upon arrival, they still need to adapt to the room. The expansion or shrinking that follows can cause **an uneven floor that can damage the locking system**. Avoid these issues by giving the planks **a suitable amount of time (at least 48 hours) to acclimatise to the room**. They will have performed the necessary expansion behaviour by then, with a successful installation as a result.



Ocean 12 XL Jazz XL Sand Natural





WHY DO I NEED TO USE AN UNDERLAY?

An underlay is a vital part of your installation and can **greatly improve the success of your installation**.

A suitable laminate underlay provides the following elements:

- **A steady base** by levelling out minor irregularities in the subfloor. This protects the locking system and helps prevent creaking
- **Reduces walking sound** and **sound transmission** to a lower-level room
- **Extra protection** against daily wear and tear (walking, falling objects, furniture...)
- Includes a **moisture barrier** to protect your floor from seasonal humidity changes in your subfloor

Always make sure to use an underlay that is **suitable for laminate flooring**. We strongly advise you to use a BerryAlloc underlay, as these are manufactured to best support our floors.

↳ Go to p. 56 to see all our available laminate underlays.

Why should I install laminate as a floating floor?

Laminate consists of at least 80% organic wood materials. This means it expands and shrinks depending on **room climate conditions**. A 'floating' installation is not attached to the subfloor (not glued) and allows the floor to move according to the necessary expansion behaviour. To allow this behaviour, you'll need to leave an **expansion gap of at least 8 – 10 mm** between your floor and all fixed constructions during installation. This is also the reason why you **cannot install a laminate floor underneath fixed constructions**, such as kitchen cabinets or built-in closets.

TIP

When installing your floor, **use flooring spacers** to make sure you're maintaining the correct distance for an expansion gap.

How do I install a laminate floor?

The installation method depends on the locking system and the laying pattern (e.g. herringbone). You'll find a **step-by-step manual available for all laminate locking systems** on the support page of our website. Our installation videos are also available on our YouTube channel.

Watch the installation video



TIP

Remember to **carefully read or watch all steps** before starting your installation.



Chateau+ Gyant Dark Brown ●

HOW SHOULD I INSTALL MY CHATEAU+ FLOOR: FLOATING OR GLUED?

Chateau+ can be installed as a floating floor, or can be fully glued to the subfloor, depending on the floor pattern. In both cases, the evenness of the subfloor is essential to obtain a **solid and long-lasting perfect result**. Make sure to thoroughly read the installation manual before installing your floor, which you can download on our website.

Maintaining your floor.

How do I maintain my new BerryAlloc floor?

Keep your floor looking brand new with these simple tips and tricks:

- Place a **doormat** at the entrance of your home to avoid bringing in dirt or moisture
- Add **felt pads** to your chair and table legs
- Use a **clear plastic mat** for under your office chair
- **Clean** any spilled liquids as soon as possible

You'll find our Care & Maintenance manual on our website, and more information on our BerryAlloc Laminate Cleaner on p. 66.



Download our Care & Maintenance manual here.



Ocean 12 XL Gyant XL Warm Natural ●

Collection overview.

Harmony Lab Colour character	
● yellow	● green
● purple	● orange
● red	● blue

Structure	
RW	Real Wood Structure - emboss in register (EIR)
W	Wood Structure - emboss (N-EIR)
S	Stone Structure - emboss stone structure (N-EIR)

Plank length
Plank width
Plank thickness
Bevels
Usage class
Number of skus

Collection

Image	Name	Color	Code	Structure	Texture
	Bloom Light Natural	● red	B6405	W	<i>natural oak – a lot of knots – matt – rich texture</i>
	Bloom Natural	● orange	B6407	W	
	Bloom Sand Natural	● yellow	B6421	W	
	Bloom Warm Natural	● yellow	B6424	W	
	Bloom Light Brown	● red	B6406	W	
	Bloom Silver Grey	● yellow	B6426	W	<i>expressive oak – a lot of knots – a lot of cracks – ultra matt – sophisticated texture</i>
	Canyon Light	● yellow ● green	B4503	RW	
	Canyon Natural	● orange	B4507	RW	
	Charme White	● blue	B7501	RW	<i>natural oak – matt – rich texture</i>
	Charme Light Natural	● yellow	B7505	RW	
	Charme Black	● purple ● red	B7516	RW	
	Chestnut White	● yellow	B6201	W	<i>matt – subtle texture</i>
	Crush Light	● red	B4203	W	<i>expressive oak – a lot of knots – occasional cracks – matt – rich texture</i>
	Crush Natural	● yellow	B4207	W	
	Crush Brown Natural	● orange ● red	B4212	W	
	Elm Light	● yellow	B7703	W	<i>matt – subtle texture</i>

100% water resistant				
504 mm	1288 mm		2038 mm	
84 mm	190 mm		241 mm	
8 mm	8 mm	12 mm	8 mm	12 mm
4	4		4	
23/33	23/33		23/33	
15	50	12	13	10
/ chateau+	/ ocean 8 V4.	/ ocean 12 V4.	/ ocean 8 XL.	/ ocean 12 XL.
	62003051			
	62003052			
62002712 (A) 62002713 (B)	62003053	62002497	62002972	62002507
	62003055			
62002710 (A) 62002711 (B)	62003050		62002974	
	62003054	62002498	62003117	62002508
	62003056			
	62003057			
	62003060			
62002720 (A) 62002721 (B)	62003058			
62002722 (A) 62002723 (B)	62003059			
62002706 (A) 62002707 (B)	62003061			
	62003063			
	62003065			
	62003062			
	62003064			

matching accessories					
Image	Image	Image	Image	Image	Image
Skirting 60 2400 mm	Skirting 80 2400 mm	Quarter Round 2400 mm	T-profile 2400 mm	Reducer profile 2400 mm	Stair nose 1200 mm
63001167	63000009		63001455	63001537	63003669
63003220	63003242		63001428	63001510	63003714
63002991	63002993	63002995	63002997	63003001	63003667
63003067	63003097		63003127	63003187	63003715
63002992	63002994	63002996	63002998	63003002	63003716
63003068	63003098		63003128	63003188	63003717
63003218	63003240		63001441	63001523	63003718
63003219	63003241		63001445	63001527	63003719
63001170	63000234		63001458	63001540	63003720
63003222	63003244		63001449	63001531	63003668
63003223	63003245		63001418	63001500	63003721
63001174	63000241		63001461	63001543	63003722
63001171	63000220		63001459	63001541	63003723
63003215	63003237		63001436	63001518	63003727
63003216	63003238		63001423	63001505	63003724
63001186	9330-3893		63001471	63001553	63003726

Continued on the next page.

Harmony Lab
Colour character

- yellow
- purple
- red
- green
- orange
- blue

Structure

- RW** Real Wood Structure - emboss in register (EIR)
- W** Wood Structure - emboss (N-EIR)
- S** Stone Structure - emboss stone structure (N-EIR)

Plank length
Plank width
Plank thickness
Bevels
Usage class
Number of skus

Collection

Image	Name	Color	SKU	Structure	Notes
	Epic Light	Orange	B8403	RW	<i>expressive oak – a lot of knots – a lot of cracks – ultra matt – sophisticated texture</i>
	Epic Natural	Orange	B8407	RW	
	Epic Grey	Green	B8408	RW	
	Epic Brown	Orange & Green	B8411	RW	
	Gyant Light	Yellow	B4103	RW	<i>expressive oak – a lot of knots – ultra matt – sophisticated texture</i>
	Gyant Light Grey	Orange	B4104	RW	
	Gyant Light Natural	Yellow	B4105	RW	
	Gyant Natural	Yellow	B4107	RW	
	Gyant Dark Brown	Orange	B4113	RW	
	Gyant (XL) Light Sand	Yellow	B1123/B4123	RW	
	Gyant (XL) Sand Natural	Yellow	B1121/B4121	RW	
	Gyant (XL) Warm Natural	Yellow	B1124/B4124	RW	
	Gyant (XL) Brown Natural	Orange	B1112/B4112	RW	
	Gyant (XL) Warm Brown	Red	B1125/B4125	RW	
	Java Light Grey	Purple	B7304	W	<i>natural oak – matt – subtle/rich texture</i>
	Java Natural	Orange	B7307	RW	
	Java Brown	Yellow & Red	B7311	RW	

100% water resistant				
504 mm	1288 mm		2038 mm	
84 mm	190 mm		241 mm	
8 mm	8 mm	12 mm	8 mm	12 mm
4	4		4	
23/33	23/33		23/33	
15	50	12	13	10
/ chateau+	/ ocean 8 V4.	/ ocean 12 V4.	/ ocean 8 XL.	/ ocean 12 XL.
	62003068	62003041		
	62003069	62003042		
	62003066			
	62003067			
62002702 (A) 62002703 (B)	62003072			
	62003073			
	62003074			
	62003076			
62002704 (A) 62002705 (B)	62003071			
	62003075	62002500	62003118	62002510
	62003077	62002499	62002977	62002509
	62003080	62002501	62003119	62002511
	62003070		62002976	
	62003078	62002502	62002979	62002512
62002714 (A) 62002715 (B)	62003081			
62002716 (A) 62002717 (B)	62003082			
62002718 (A) 62002719 (B)	62003079			

matching accessories						
Image	Skirting 60 2400 mm	Skirting 80 2400 mm	Quarter Round 2400 mm	T-profile 2400 mm	Reducer profile 2400 mm	Stair nose 1200 mm
	63003082	63003112		63003142	63003202	63003736
	63003083	63003113	63003292	63003143	63003203	63003737
	63003084	63003114	63003293	63003144	63003204	63003739
	63003085	63003115	63003294	63003145	63003205	63003738
	63003211	63003233		63001421	63001503	63003750
	63003212	63003234		63001420	63001502	63003751
	63001132	63001207		63001426	63001508	63003752
	63003213	63003235		63001425	63001507	63003753
	63003214	63003236		63001427	63001509	63003754
	63003064	63003094	63003273	63003124	63003184	63003710
	63003063	63003093		63003123	63003183	63003666
	63003065	63003095		63003125	63003185	63003711
	63003062	63003092		63003122	63003182	63003712
	63003066	63003096	63003275	63003126	63003186	63003713
	63001181	9330-3856		63001468	63001550	63003725
	63001175	9330-3488		63001462	63001544	63003670
	63003221	63003243		63001444	63001526	63003728

Continued on the next page.

Harmony Lab
Colour character

- yellow
- purple
- red
- green
- orange
- blue

Structure

- RW** Real Wood Structure - emboss in register (EIR)
- W** Wood Structure - emboss (N-EIR)
- S** Stone Structure - emboss stone structure (N-EIR)

Plank length
Plank width
Plank thickness
Bevels
Usage class
Number of skus

Collection

	Jazz (XL) Light Grey	●	B1004/B4604	RW ⁽¹⁾	natural oak – matt – rich texture
	Jazz (XL) Sand Natural	●	B1020/B4620	RW ⁽¹⁾	
	Majesty Natural ⁽³⁾	●	B2207	W	3 strip – matt – subtle texture
	Merbau Brown	●	B6311	W	gloss – subtle texture
	Ragnar Light Sand	●	B8523	W	natural pine – matt – subtle texture
	Ragnar Warm Natural	●	B8524	W	
	Retro Chic Blue Grey ⁽³⁾	●	B4409	S	stone – matt – subtle texture
	Select Light Sand	●	B8323	RW ⁽²⁾	natural soft oak – ultra matt – sophisticated texture
	Select Sand Natural	●	B8321	RW ⁽²⁾	
	Select Natural	●	B8307	RW	
	Select Light Brown	● ●	B8306	RW ⁽²⁾	
	Teak Brown	●	B7811	W	gloss – subtle texture
	Texas Light Natural	● ●	B7605	RW	expressive oak – matt – rich texture
	Texas Light Brown	●	B7606	RW	
	Texas Grey	●	B7608	RW	
	Texas Brown	●	B7611	RW	
	Walnut Brown	● ●	B8111	W	gloss – subtle texture

100% water resistant				
504 mm	1288 mm		2038 mm	
84 mm	190 mm		241 mm	
8 mm	8 mm	12 mm	8 mm	12 mm
4	4		4	
23/33	23/33		23/33	
15	50	12	13	10
/ chateau+	/ ocean 8 V4.	/ ocean 12 V4.	/ ocean 8 XL.	/ ocean 12 XL.
	62003083	62002503	62002975	62002513
	62003084	62002504	62002973	62002514
	62003086			
62002708 (A) 62002709 (B)	62003085			
	62003087			
	62003088			
	62003090			
	62003091		62002978	
	62003093	62002505	62003121	62002515
	62003092			
	62003089	62002506	62003120	62002516
62002728 (A) 62002729 (B)	62003094			
62002724 (A) 62002725 (B)	62003097			
62002726 (A) 62002727 (B)	62003099			
	62003096			
	62003095			
62002730 (A) 62002731 (B)	62003098			

matching accessories					
Skirting 60 2400 mm	Skirting 80 2400 mm	Quarter Round 2400 mm	T-profile 2400 mm	Reducer profile 2400 mm	Stair nose 1200 mm
63001172	63000237		63003423	63003424	63003729
63003056	63003086		63003116	63003176	63003730
63001162	9330-2915		63001450	63001532	63003731
63001166	9330-2503		63001454	63001536	63003732
63003076	63003106		63003136	63003196	63003733
63003077	63003107		63003137	63003197	63003734
63003217	63003239		63001955	63001961	63003735
63003081	63003111		63003141	63003201	63003740
63003080	63003110		63003140	63003200	63003741
63003079	63003109	63003288	63003139	63003199	63003743
63003078	63003108		63003138	63003198	63003742
63001177	9330-3636		63001464	63001546	63003744
63003224	63003246		63001432	63001514	63003745
63001165	9330-3013		63001453	63001535	63003746
63003225	63003247		63001415	63001497	63003747
63003226	63003248		63001414	63001496	63003748
63003227	63003249		63002879	63002883	63003749





(1) RW for XL planks, W for standard planks (2) RW for standard planks, W for XL planks (3) no bevels

Technical overview.

100% water resistant					
Plank length	504 mm	1288 mm		2038 mm	
Plank width	84 mm	190 mm		241 mm	
Plank thickness	8 mm	8 mm	12 mm	8 mm	12 mm
Bevels	4	4		4	
Usage class EN 10874	23/33	23/33		23/33	
Collection	/ chateau+	/ ocean 8 V4.	/ ocean 12 V4.	/ ocean 8 XL.	/ ocean 12 XL.
Residential Warranty	Lifetime	Lifetime	Lifetime	Lifetime	Lifetime
Commercial Warranty	10 Y	10 Y	10 Y	10 Y	10 Y
Loc system	OmniLoc	DuoLoc	PentaLoc	PentaLoc	PentaLoc
Hydro+ technology	•	•	•	•	•
Floor heating compatibility	•	•	•	•	•
Abrasion resistance ISO 24338A	AC5	AC5	AC5	AC5	AC5
Impact resistance small ball EN 17368	≥ 70 mm	≥ 70 mm	≥ 70 mm	≥ 70 mm	≥ 70 mm
Impact resistance big ball EN 13329	≥ 750 mm	≥ 750 mm (**)	≥ 750 mm (**)	≥ 750 mm (**)	≥ 750 mm (**)
Thickness swelling ISO 24336	12% (requirement ≤ 15%)	12% (requirement ≤ 15%)	12% (requirement ≤ 15%)	12% (requirement ≤ 15%)	12% (requirement ≤ 15%)
Fire resistance EN 13501-1	Cfl-S1	Cfl-S1	Cfl-S1	Cfl-S1	Cfl-S1
Formaldehyde EN 717-1	E1	E1	E1	E1	E1
Slipperiness EN 13893	DS	DS	DS	DS	DS
Density EN 323	950 kg/m ³	900 kg/m ³	900 kg/m ³	900 kg/m ³	900 kg/m ³
Resistance to staining EN 438	5 (groups 1+2), 4 (group 3)	5 (groups 1+2), 4 (group 3)	5 (groups 1+2), 4 (group 3)	5 (groups 1+2), 4 (group 3)	5 (groups 1+2), 4 (group 3)
Effect of a furniture leg EN 16581	No damage (foot type 0)	No damage (foot type 0)	No damage (foot type 0)	No damage (foot type 0)	No damage (foot type 0)
Effect of a castor chair EN ISO 4918	No damage with type W wheels, 20.000 cycles	No damage with type W wheels, 20.000 cycles	No damage with type W wheels, 20.000 cycles	No damage with type W wheels, 20.000 cycles	No damage with type W wheels, 20.000 cycles
Thermal resistance in combination with BerryAlloc underlay ISO 8302	0,08 m ² K/W (*)	0,08 m ² K/W	0,12 m ² K/W	0,08 m ² K/W	0,12 m ² K/W
CE mark	•	•	•	•	•
UKCA mark	•	•	•	•	•
PEFC	•	•	•	•	•
French VOC emission regulation	A	A+	A+	A+	A+
Planks/pack	24	9	6	6	4
m ² /pack	1,02	2,20	1,47	2,95	1,96
Weight/pack kg	7,3	15,7	16,0	21,1	21,1
Packs/pallet	48	56	56	54	54
m ² /pallet	48,8	123,3	82,2	159,1	106,1
Weight/pallet kg	365	891	908	1159	1159

(*) with Excellence Plus underlay (**) with Excellence Go 60 underlay

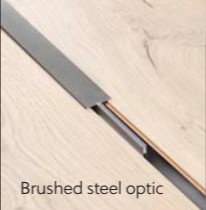


Install.

underlays			hydro+ finish		
					
Excellence Plus	Excellence Impact+	Excellence Go 60	Hydro+ Set 2in1	Fillertwine	Sealant kit
SEPLUS10	63000905	63003600	63002897	63002899	HPSILICONE

installation tools		fixing	
			
DuoLoc Tapping Block	BerryAlloc Installation tool	Hydro+ Glue	Skirting Clips
63001777	63003584	HPGLUE	9310-0017

Finish.

white/paintable skirtings					
60 mm skirting	80 mm skirting	100 mm skirting	English skirting	Cover skirting	Quarter round
2400x12x60 mm	2400x12x80 mm	2400x14x100 mm	2400x14x110 mm	2400x26x110 mm	2400x14x14 mm
63003939	63003940	9372-3045	9370-3045	63001781	63001736

aluminium profiles		
		
T-profile	Reducer profile	End profile
L x W x H		
2000x31x9 mm	2000x40x12 mm	2000x21x11 mm
Silver (floor height 7-12 mm)	63001103	63001107
Silver (floor height 12-17 mm)	63001104	63001108
Brushed steel optic (floor height 7-12 mm)	63001105	63001109
Brushed steel optic (floor height 12-17 mm)	63001106	63001110

Maintain.

laminat cleaner

LC1000

Found your dream floor?

Write it down here

DECOR NAME(S)

--	--	--

COLLECTION(S)

<input type="checkbox"/> / ocean+.	<input type="checkbox"/> / chateau+.
------------------------------------	--------------------------------------

REFERENCE NUMBER(S)

You'll find the reference number on p. 74-77

--	--	--

THESE ARE MY ROOM MEASUREMENTS

length x width (metres)

	x	=	m ²
	x	=	m ²

SQUARE METRES OF FLOORING REQUIRED

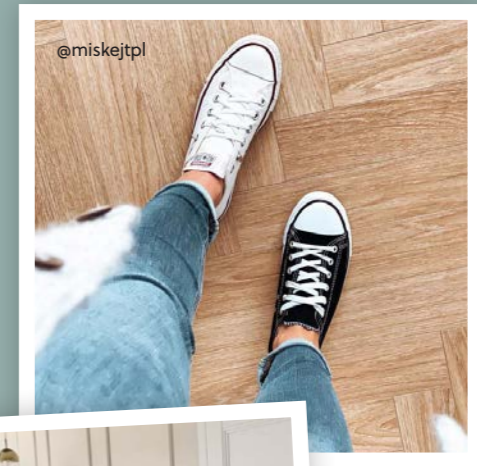
See tip p. 69

--	--	--

I'LL NEED THESE ACCESSORIES FOR A SUCCESSFUL INSTALLATION

<input type="checkbox"/> underlay	<input type="checkbox"/> tapping block/ BerryAlloc installation tool	<input type="checkbox"/> hydro+ kit
<input type="checkbox"/> profiles	<input type="checkbox"/> skirtings	<input type="checkbox"/> laminate cleaner

We'd love to see
your new floor!
Share it on
social media with
#MyBerryAlloc.



Find a nearby
BerryAlloc
dealer.

BERRY  ALLOC